

CORRECTION

Open Access



Correction to: *Cichorium intybus* L. promotes intestinal uric acid excretion by modulating ABCG2 in experimental hyperuricemia

Yu Wang, Zhijian Lin, Bing Zhang*, Anzheng Nie and Meng Bian

Correction to: *Nutrition & Metabolism* (2017) 14:38

<https://doi.org/10.1186/s12986-017-0190-6>

Following the publication of the original article [1], errors were identified in the Abstract, Tables 1 and 2, and Figure 3.

The sentence currently reads:

These findings indicate that chicory increases uric acid excretion by intestines, which may be related to the stimulation of intestinal uric acid excretion via

down-regulating the mRNA and protein expressions of ABCG2.

The sentence should read:

These findings indicate that chicory increases uric acid excretion by intestines, which may be related to the stimulation of intestinal uric acid excretion via up-regulating the mRNA and protein expressions of ABCG2.

The original article [1] has been corrected.

The original article can be found online at <https://doi.org/10.1186/s12986-017-0190-6>.

*Correspondence: zhangb@bucm.edu.cn
Department of Clinical Chinese Pharmacy, School of Chinese Pharmacy,
Beijing University of Chinese Medicine, Beijing, China



© The Author(s) 2021. **Open Access** This article is licensed under a Creative Commons Attribution 4.0 International License, which permits use, sharing, adaptation, distribution and reproduction in any medium or format, as long as you give appropriate credit to the original author(s) and the source, provide a link to the Creative Commons licence, and indicate if changes were made. The images or other third party material in this article are included in the article's Creative Commons licence, unless indicated otherwise in a credit line to the material. If material is not included in the article's Creative Commons licence and your intended use is not permitted by statutory regulation or exceeds the permitted use, you will need to obtain permission directly from the copyright holder. To view a copy of this licence, visit <http://creativecommons.org/licenses/by/4.0/>. The Creative Commons Public Domain Dedication waiver (<http://creativecommons.org/publicdomain/zero/1.0/>) applies to the data made available in this article, unless otherwise stated in a credit line to the data.

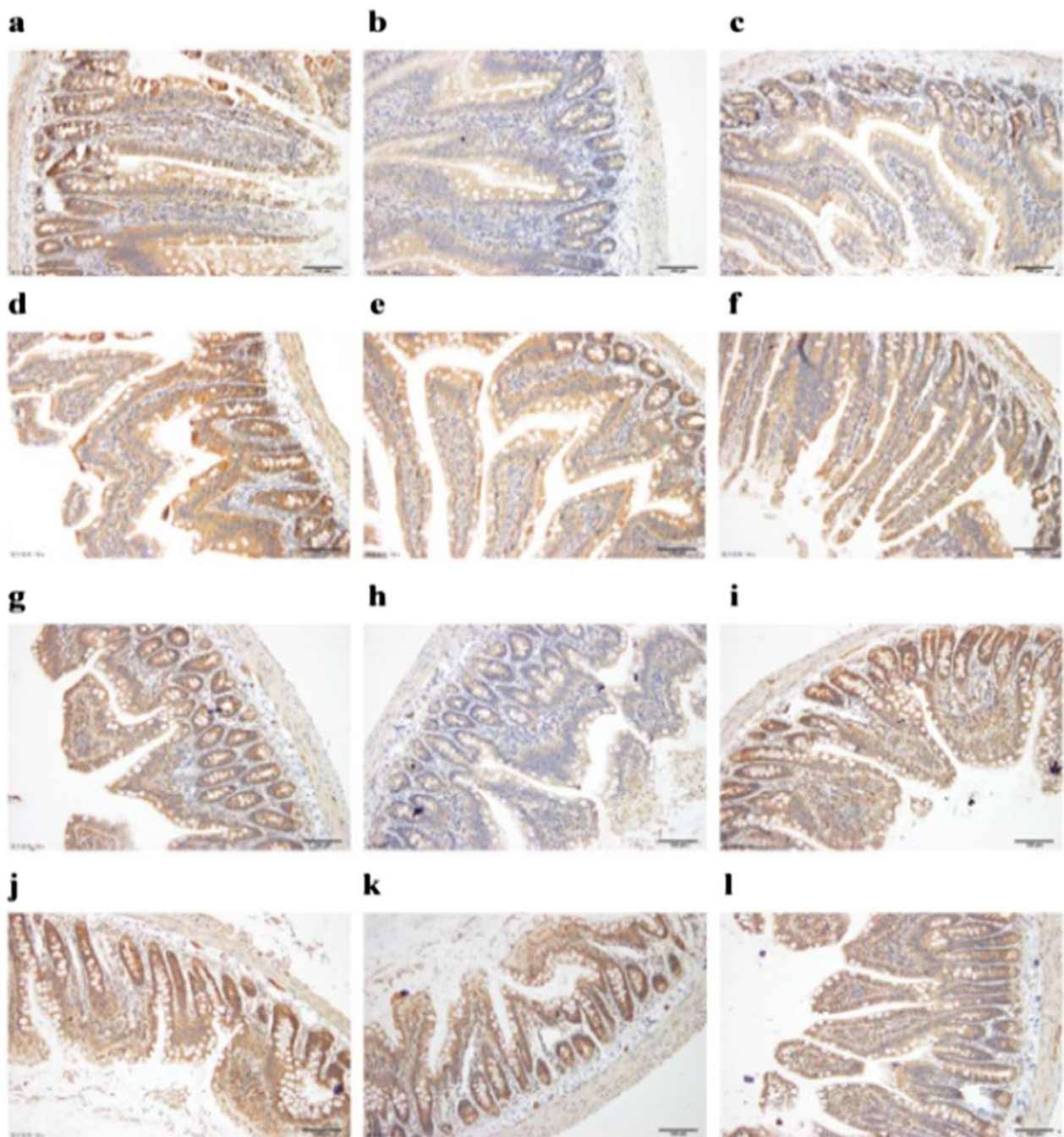


Fig. 3 Location of ABCG2 and effects of chicory on ABCG2 protein expression. **a** Jejunum of normal rat ABCG2 IHC stain ($\times 20$ objective lens). **b** Jejunum of model rat ABCG2 IHC stain ($\times 20$ objective lens). **c** Jejunum of benzbromarone rat ABCG2 IHC stain ($\times 20$ objective lens). **d** Jejunum of chicory extract high-dose rat ABCG2 IHC stain ($\times 20$ objective lens). **e** Jejunum of chicory extract middle-dose rat ABCG2 IHC stain ($\times 20$ objective lens). **f** Jejunum of chicory extract low-dose rat ABCG2 IHC stain ($\times 20$ objective lens). **g** Ileum of normal rat ABCG2 IHC stain ($\times 20$ objective lens). **h** Ileum of model rat ABCG2 IHC stain ($\times 20$ objective lens). **i** Ileum of benzbromarone rat ABCG2 IHC stain ($\times 20$ objective lens). **j** Ileum of chicory extract high-dose rat ABCG2 IHC stain ($\times 20$ objective lens). **k** Ileum of chicory extract middle-dose rat ABCG2 IHC stain ($\times 20$ objective lens). **l** Ileum of chicory extract low-dose rat ABCG2 IHC stain ($\times 20$ objective lens). Low expression of model group in jejunum and ileum ($P < 0.05$, $P < 0.01$ vs. control group slices), which developed heavy stains; inhibition of ABCG2 by chicory ($P < 0.01$, $P < 0.01$ vs. model group slices)

Table 1 Body weight of rats during experimental days (n = 16, g)

Groups	0d	10d	20d	30d	40d
CON	251.31 ± 10.79	324.79 ± 14.79	358.12 ± 14.11	398.38 ± 21.24	422.49 ± 25.14
MOD	248.38 ± 11.02	311.45 ± 19.66	347.19 ± 22.97	387.68 ± 27.10	416.23 ± 32.75
BEN	243.45 ± 10.01	312.36 ± 11.58	344.04 ± 14.44	383.26 ± 18.52	405.41 ± 19.26
CHI-H	248.57 ± 11.19	316.72 ± 23.56	357.91 ± 27.60	397.21 ± 33.74	418.50 ± 40.09
CHI-M	247.94 ± 14.50	308.68 ± 22.28	347.85 ± 26.18	391.55 ± 32.40	412.93 ± 37.68
CHI-L	246.23 ± 12.16	315.35 ± 19.69	356.63 ± 22.61	395.39 ± 25.87	417.62 ± 30.46

Table 2 Uric acid-lowering effects of intragastric chicory in the hyperuricemic rats (n = 16, μmol/L)

Groups	0d	10d	20d	30d	40d
CON	51.47 ± 21.30	66.44 ± 26.12	76.22 ± 22.57	133.80 ± 33.23	74.10 ± 24.41
MOD	56.72 ± 28.76	87.63 ± 27.34*	98.07 ± 22.23**	177.08 ± 44.99**	95.80 ± 18.01**
BEN	50.56 ± 26.81	74.66 ± 35.29	75.64 ± 14.69 [#]	147.11 ± 30.84 [#]	82.60 ± 19.76
CHI-H	50.33 ± 21.91	52.40 ± 16.77 [#]	66.17 ± 21.09 [#]	145.61 ± 36.58 [#]	73.82 ± 35.90 [#]
CHI-M	53.08 ± 25.51	55.90 ± 29.62 [#]	68.82 ± 16.84 [#]	112.52 ± 45.48 [#]	83.07 ± 41.07
CHI-L	50.22 ± 21.67	70.05 ± 32.18	65.09 ± 28.36 [#]	155.27 ± 44.47	98.11 ± 9.46

* $P < 0.05$, ** $P < 0.01$ versus the CON group; [#] $P < 0.05$, [#] $P < 0.01$ versus the MOD group. Means with different superscript lowercase letters in the same column are significantly different

Published online: 27 December 2021

Reference

1. Wang, et al. *Cichorium intybus* L. promotes intestinal uric acid excretion by modulating ABCG2 in experimental hyperuricemia. *Nutr Metab.* 2017;14:38. <https://doi.org/10.1186/s12986-017-0190-6>.

Publisher's Note

Springer Nature remains neutral with regard to jurisdictional claims in published maps and institutional affiliations.