

RESEARCH

Open Access

Influence of a ketogenic diet, fish-oil, and calorie restriction on plasma metabolites and lipids in C57BL/6J mice

Joshua J Meidenbauer[†], Nathan Ta[†] and Thomas N Seyfried^{*}

Abstract

Background: Diet therapies including calorie restriction, ketogenic diets, and fish-oil supplementation have been used to improve health and to treat a variety of neurological and non-neurological diseases.

Methods: We investigated the effects of three diets on circulating plasma metabolites (glucose and β -hydroxybutyrate), hormones (insulin and adiponectin), and lipids over a 32-day period in C57BL/6J mice. The diets evaluated included a standard rodent diet (SD), a ketogenic diet (KD), and a standard rodent diet supplemented with fish-oil (FO). Each diet was administered in either unrestricted (UR) or restricted (R) amounts to reduce body weight by 20%.

Results: The KD-UR increased body weight and glucose levels and promoted a hyperlipidemic profile, whereas the FO-UR decreased body weight and glucose levels and promoted a normolipidemic profile, compared to the SD-UR. When administered in restricted amounts, all three diets produced a similar plasma metabolite profile, which included decreased glucose levels and a normolipidemic profile. Linear regression analysis showed that circulating glucose most strongly predicted body weight and triglyceride levels, whereas calorie intake moderately predicted glucose levels and strongly predicted ketone body levels.

Conclusions: These results suggest that biomarkers of health can be improved when diets are consumed in restricted amounts, regardless of macronutrient composition.

Keywords: Ketogenic diet, Omega-3 fatty acids, Calorie restriction, Glucose, Ketones

Background

Mounting evidence suggests that dietary intake can influence the prognosis of a broad range of diseases, including epilepsy, autism, cancer, Alzheimer's disease, and cardiovascular disease [1-5]. Popular diets to treat these conditions include the ketogenic diet, low-glycemic index treatment diet, fish-oil supplemented diets, and calorie restricted diets. There is continued debate and interest on how dietary composition and quantity affects body weight, blood lipid profile, and glycemic control [6-10]. In order to effectively utilize dietary intervention to treat disease, it is important to understand how different treatment modalities could affect plasma metabolites, such as glucose and ketone bodies, and the overall health and vitality of the subjects.

Plasma glucose and ketone levels are important prognosticators of dietary efficacy for a variety of neurological and non-neurological disorders [5,11-16]. In epilepsy, studies revealed that the efficacy of the restricted ketogenic diet relies on how well the diet lowers blood glucose and elevates blood ketone levels [17-19]. Similarly, preclinical and clinical studies have shown a positive effect of increased circulating ketone levels and reduced glucose levels in disease outcome in cancer [13,20-22]. In healthy individuals, however, it is unclear whether reduced glucose levels and increased ketone levels improves health, though it may be associated with metabolic disease resistance [23].

Conflicting results on blood lipid and glucose levels were reported in humans and mice on the ketogenic diet. In adults on the ketogenic diet, triglyceride levels remain unchanged or are lowered, whereas cholesterol levels remain unchanged, are lowered, or are increased [24-27]. The ketogenic diet increases plasma triglyceride

* Correspondence: thomas.seyfried@bc.edu

[†]Equal contributors

Biology Department, Boston College, Chestnut Hill, MA 02467, USA

and cholesterol levels in children [28]. Fasting glucose in both adults and children remains unchanged or is lowered on the ketogenic diet [27,29-33], whereas the blood ketones are consistently increased [34]. In mice, the ketogenic diet decreases plasma triglyceride levels while increasing cholesterol levels [35,36]. Increased, decreased, or no change in plasma glucose levels were reported in mice on the ketogenic diet [13,18,35]. As in children, plasma ketone levels are consistently elevated in mice on ketogenic diets [18,35].

Supplementation with fish-oil leads to more consistent effects on blood lipid and glucose levels, compared to the ketogenic diet. Blood triglyceride levels decrease, whereas total cholesterol levels remain unchanged in humans [37-41]. Fasting glucose levels are unchanged in non-diabetic individuals, but are increased in type-2 diabetic individuals that supplement with fish-oil [39-41]. Blood ketone levels remain unchanged after supplementation with fish-oil [42]. Fish-oil supplemented and derived diets in mice reduce total plasma cholesterol and either decrease or have no effect on plasma triglyceride levels [43-45]. Fasting glucose in mice remains unchanged or is decreased in mice given fish-oil supplemented or derived diets [44-46]. Hepatic ketogenesis increased in rats fed a fish-oil-supplemented diet, due to decreased lipogenesis and increase in fatty acid oxidation [47].

Calorie restriction is a long-studied dietary modality that is often used in conjunction with the ketogenic diet to treat a variety of neurological disorders [48], and is used as a prophylactic for cardiovascular disorders and other pathologies [49-51]. Calorie restriction in humans leads to consistent reductions in total cholesterol and triglyceride levels [52-54], while blood glucose levels are consistently lowered [52,53] and plasma ketone body levels are increased [55,56]. In mice, calorie restriction leads to either a decrease or no change in plasma total cholesterol and triglyceride levels [35,57]. Calorie restriction in mice generally leads to a decrease in plasma glucose levels and increase in plasma ketone body levels [13,18,57,58], although there are reports showing glucose levels can remain unchanged with calorie restriction [35], and ketone body levels remaining unchanged or even decreasing with calorie restriction [35,59].

To assess the effects of diet on plasma glucose and ketone levels, along with their effect on hormones and lipids, we evaluated the influence of a standard mouse chow diet, a ketogenic diet, and a fish-oil supplemented diet under *ad libitum* feeding conditions in the inbred C57BL/6J (B6) mouse strain. These diets can be used to treat diseases and disorders, and it remains unclear if the therapeutic efficacy of the diets is related to their composition or to a modest calorie reduction [60,61]. The three diets were also evaluated under calorie-restricted conditions. These diet types have been used extensively in the literature, with the

ketogenic diet being used to treat epilepsy and other neurological disorders and the fish-oil supplemented diet being used to treat cardiovascular dysfunction and inflammatory disease [1,62-66]. We found differences in plasma metabolite profiles between the standard diet, ketogenic diet, and fish-oil supplemented diet, when fed *ad libitum*. However, these differences were mostly minimized when administered under calorie restriction, which suggests that biomarkers of health are improved in calorie-restricted diets regardless of macronutrient composition.

Methods

Mice

The C57BL/6J (B6) mice were obtained originally from Jackson Laboratory (Bar Harbor, ME). The mice were maintained in the Boston College Animal Care Facility. Adult male mice (120 days of age) were used and housed individually in a temperature-regulated room at 22°C and kept on a 12-hour light–dark cycle. Food was provided either *ad libitum* (AL) or restricted to reduce body weight by 20% (CR). Water was provided *ad libitum* to all mice. All animal procedures were in strict accordance with the NIH Guide for the Care and Use of Laboratory Animals and were approved by the Boston College Institutional Animal Care and Use Committee (IACUC).

Diets

All mice were fed *ad libitum* with standard rodent chow (Prolab RMH 3000; PMI LabDiet, Richmond, IN, USA) during the first seven days of the study (pre-trial period). This is the standard mouse pellet diet, which contains a balance of vitamins and minerals. The standard diet (SD) was prepared by mixing 1 g of powdered standard mouse diet with 1 mL of water to form a paste. The lard-based ketogenic diet (KD) was prepared by the manufacturer (Zeigler Bros. Inc., Gardners, PA, USA), and has a full complement of vitamins and minerals prepared specifically for rodents. The fish-oil supplemented diet (FO) was prepared by mixing 3 g of powdered standard mouse diet with 1 g of CVS Fish Oil to form a crude paste. The composition of the diets is given in Table 1. All diets were placed into 25 mL beakers, which were previously filled halfway with solid baseplate wax, to allow mice free access to the food.

Dietary treatment

After the seven-day pre-trial period, mice were assigned to one of six groups (n = 4 mice/group): 1) standard mouse chow diet fed AL (SD-UR), 2) standard mouse chow diet fed CR to achieve a 20% body weight reduction (SD-R), 3) the lard-based ketogenic diet fed AL (KD-UR), 4) the lard-based ketogenic diet fed CR to achieve a 20% body weight reduction (KD-R), 5) the fish-oil supplemented diet fed

Table 1 Composition (%) of standard diet, ketogenic diet, and fish-oil supplemented diet

Components	Standard diet (SD)	Ketogenic diet (KD)	Fish-oil diet (FO)
Carbohydrate	52	1	39
Fat	12	70	34
Protein	23	13	17
Fiber	4	11	3
Ash	6	3	4
Moisture	3	2	3
Metabolizable Energy (kcal/g)	3.20	6.35	4.65

AL (FO-UR), and 6) the fish-oil supplemented diet fed CR to achieve a 20% body weight reduction (FO-R).

Body weights and food intake measurements were taken daily three hours after lights-on. Based on food intake and body weight during the pre-trial period, food in the CR groups was restricted to achieve a 20% reduction in body weight. We used body weight as the endpoint for CR, as we showed previously that body weights are a more stable and consistent variable than food intake, which changes significantly on a daily basis in *ad libitum* fed mice [18,57,58].

The study period lasted a total of 32 days. After the 7-day pre-trial period, mice were fasted for 16 hrs on day 0, before initiating their respective diets. By day 7 of the dietary treatment, body weight and food intake stabilized. Therefore, all calculations involving body weight and food intake were taken from days 7–32 of the study. Metabolizable energy intake was calculated according to the manufacturers' measurements of metabolizable energy content (Table 1).

Collection of plasma

After a 3-hr fast on day 32 (during the light cycle), mice were anesthetized with isoflurane, and plasma was obtained by collecting blood into heparinized tubes through the retro-orbital sinus. Plasma was collected by centrifuging blood at $6,000 \times g$ for 10 minutes at 4°C and was stored at -80°C until analysis.

Measurement of glucose, β -hydroxybutyrate, and hormones

Glucose was measured spectrophotometrically using the Trinder Assay (Sigma-Aldrich, St. Louis, MO, USA). β -hydroxybutyrate was measured enzymatically using a modification of the Williamson *et al.* procedure [67]. Plasma insulin was measured by rat/mouse insulin ELISA (Millipore, Billerica, MA, USA), and plasma adiponectin was measured by mouse adiponectin ELISA (Millipore).

Measurement of lipids

We analyzed the plasma content of the triglycerides, cholesterol, free fatty acids, cholesteryl ester, phosphatidylcholine, lyso-phosphatidylcholine, phosphatidylethanolamine, and sphingomyelin, as previously described [68]. Briefly, lipids were extracted by adding chloroform (C) and methanol (M) to plasma in a ratio of 30:60:8 (C:M:plasma by volume). The lipid extract was added to DEAE-Sephadex (A-25, GE Healthcare, Piscataway, NJ) to separate the neutral and acidic lipid fractions, as previously described [69]. Neutral lipids were eluted from the column with C:M: dH_2O at 30:60:8 by volume, and dried by rotary evaporation. The acidic lipids, which contain a portion of the free fatty acids, were eluted with C:M:0.8M sodium acetate at 30:60:8 by volume, and dried by rotary evaporation.

To quantify the lipids, we spotted an equivalent of $3 \mu\text{L}$ of plasma per lane on $10 \times 20 \text{ cm}$ Silica gel 60 HPTLC plates (Merck, Darmstadt, Germany) using a Camag Linomat II auto-TLC spotter (Camag Scientific Inc., Wilmington, NC, USA). The plates were developed in a solvent system that contained C:M:acetic acid:formic acid: dH_2O (70:30:12:4:2 by volume) up to 4.5 cm, and then run in a second solvent system containing hexane:isopropyl ether:acetic acid (65:35:2 by volume) up to 10 cm, as previously described [57,69]. Lipid bands were visualized by charring with 3% cupric acetate in 8% phosphoric acid solution and were scanned using the Personal Densitometer SI (Molecular Dynamics, Sunnyvale, CA, USA). The concentration of each individual lipid was calculated from a standard curve. To measure free fatty acids, which separate into both neutral and acidic lipid fractions, an equivalent of $3 \mu\text{L}$ of plasma from the neutral and acidic lipid portion was combined and spotted, on a separate plate, as described above.

Statistical analyses

Group size was determined through power analysis using G*Power 3 statistical software [70]. α error probability and β error probability were set to a maximum of 0.01, and effect size was conservatively estimated from previous data [18,35,57]. This yielded an n of 4 mice per group for six groups, with an actual power of 0.9927 and a critical F value of 4.248. All other statistical analyses were performed using SPSS Software (IBM SPSS Statistics, Version 20). All values are presented as mean \pm standard error of the mean (SEM). One-way ANOVA was used to evaluate differences between dietary groups. Bivariate linear regression analysis with ANOVA was used to independently assess the predictive strength of select independent variables on final body weight, plasma glucose, β -hydroxybutyrate, and triglycerides, regardless of dietary treatment. Pearson bivariate correlation analysis was used to determine the relationship between body

weight, food intake, plasma glucose, β -hydroxybutyrate, insulin, adiponectin, and lipid levels.

Results

Dietary modification as a treatment modality is subject to variability, as investigators often use different approaches to implement the diets, which hinders study reproducibility. To improve reproducibility and evaluate the merits of each diet, we fasted all of the mice for 16 hrs prior to initiating the diets. This allows for a proper evaluation of the diets, as the mice will have the same metabolic set point. Also, the influence of the previously administered standard rodent chow on the animal's metabolism will be minimized [71]. We have also observed that fasting mice before initiating diets also serves to limit the amount of self-restriction that mice impose when switched to an unfamiliar diet (personal observations).

Body weight and metabolizable energy intake

All CR mice lost approximately 20% of their initial body weight (Figure 1, Table 2). All mice tolerated the diets well and appeared healthy and vigorous at the end of the study. Activity levels were comparable in all groups, and lethargy was not present in any mouse.

Body weights stabilized after approximately 7 days following diet implementation (Figure 1), whereas calorie intake stabilized after 8–10 days (data not shown). While the SD-UR group maintained body weight throughout the study, the KD-UR group gained approximately 11% body weight during the 32-day period, despite consuming approximately 10% less in calculated daily calories compared to SD-UR (Table 2). The FO-UR group lost approximately 11% body weight during the 32-day

period, and this occurred with a 12% reduction in calorie intake compared to SD-UR. While body weight was reduced by 20% in each CR group relative to the *ad libitum* control group, the amount of CR necessary to achieve this weight loss depended on the macronutrient composition of the diet. Mice fed the higher-fat diets (KD-R and FO-R) required a calorie reduction of approximately 33%, whereas mice fed the normal chow diet (SD-R) required a 24% calorie reduction to achieve the 20% body weight loss. The FO-UR group consumed 700 mg of fish oil per day, whereas the FO-R group consumed 550 mg per day.

Influence of diet on plasma metabolites and hormones

Glucose levels were reduced in all three CR groups compared to the levels in the SD-UR group and in their respective unrestricted diets (Table 3). Glucose levels were also lower in the FO-UR group than in the SD-UR group, though this might reflect the differences in body weights. The blood glucose levels in the FO-UR group were similar to those in the KD-R group. Blood glucose levels were significantly higher in the KD-UR group than in the SD-UR group.

β -hydroxybutyrate (major circulating ketone) levels were increased in all the CR groups compared to their respective *ad libitum* diet groups, with the KD-R group exhibiting the highest levels of ketones (Table 3). KD-UR and FO-UR groups had significantly elevated ketone levels compared to the SD-UR group.

Plasma insulin levels were assessed from the mice after a 3-hr fast, which along with fasting blood glucose levels comprise a homeostatic model assessment of insulin resistance (HOMA-IR) value and is indicative of insulin

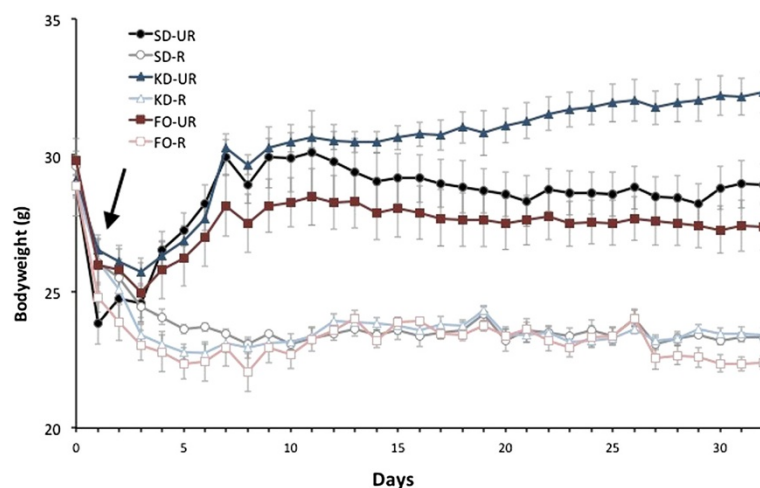


Figure 1 Influence of dietary regimen on body weight. Weights are expressed as means \pm SEM. Arrow represents initiation of respective diets after a 16 hour fast. SD-UR, standard diet unrestricted; SD-R, standard diet restricted; KD-UR, ketogenic diet unrestricted; KD-R, ketogenic diet restricted; FO-UR, fish-oil supplemented diet unrestricted; FO-R, fish-oil supplemented diet restricted.

Table 2 Influence of dietary intake on bodyweight and calorie consumption in C57BL/6J mice

	Diet					
	Standard diet		Ketogenic diet		Fish-oil diet	
	UR	R	UR	R	UR	R
Final Bodyweight (g) ^a	29.0 ± 0.7	23.6 ± 0.1	32.5 ± 0.7	23.3 ± 0.3	27.9 ± 0.9	23.1 ± 0.2
Bodyweight Change (%)	+0.3 ± 1.8	-21.1 ± 1.4	+11.2 ± 2.3	-19.9 ± 0.6	-10.7 ± 2.7	-22.4 ± 1.1
Energy Intake (kcal) ^b	15.0 ± 0.4	11.3 ± 0.6	13.4 ± 0.3	10.1 ± 0.3	13.1 ± 0.6	10.2 ± 0.2
Calorie Difference (%) ^c from UR Diet	0.0 ± 1.3	-24.4 ± 1.1	0.0 ± 1.2	-24.9 ± 2.2	0.0 ± 4.6	-22.3 ± 1.9
Calorie Difference (%) ^d from SD-UR	0.0 ± 1.3	-24.4 ± 1.1	-10.5 ± 1.1	-32.8 ± 1.9	-12.2 ± 4.0	-31.8 ± 1.7

^aValues are expressed as the mean ± SEM (n = 4 mice per group).

^bMean metabolizable energy (kcal) consumed per mouse per day from days 7-31.

^cFrom UR diet.

^dFrom SD-UR.

sensitivity [72-74]. Low HOMA-IR values indicate increased insulin sensitivity. Insulin levels were lower in all CR groups than in their comparable *ad libitum* groups, which indicates high insulin sensitivity (Table 3). While insulin levels were similar in the SD-UR and KD-UR groups, insulin levels were lower in FO-UR group and comparable to those in the CR groups. The high insulin sensitivity

mirrored the lower plasma glucose levels in FO-UR mice. We found that plasma glucose and insulin levels were highly correlated across all groups (Table 4). Adiponectin levels were highest in the CR groups, with SD-R and KD-R having significantly elevated levels, and FO-R trending toward increased levels (Table 3). The levels of adiponectin were similar across all unrestricted diets.

Table 3 Influence of dietary intake on plasma metabolites, hormones, and lipids in C57BL/6J mice

	Diet					
	Standard diet		Ketogenic diet		Fish-oil diet	
	UR	R	UR	R	UR	R
Metabolites^a						
Glucose (mM)	12.8 ± 0.5	6.1 ± 0.4*	15.1 ± 0.4 [§]	8.5 ± 0.5* [§]	8.7 ± 0.6 [§]	6.0 ± 0.1* [§]
β-Hydroxybutyrate (mM)	0.4 ± 0.0	1.4 ± 0.2*	1.1 ± 0.1 [§]	2.9 ± 0.2* [§]	0.9 ± 0.1 [§]	2.0 ± 0.1* [§]
Glucose/β-Hydroxybutyrate Ratio	35.4 ± 4.7	4.6 ± 1.0*	13.4 ± 2.5 [§]	2.9 ± 0.9* [§]	10.4 ± 2.2 [§]	3.0 ± 0.3* [§]
Hormones^a						
Insulin (pmol/L)	182 ± 17	108 ± 3*	160 ± 7	110 ± 4* [§]	112 ± 1 [§]	98 ± 2 [§]
Adiponectin (μg/mL)	9.2 ± 0.4	18.9 ± 3.8*	11.1 ± 1.2	15.3 ± 0.8	8.7 ± 0.3	13.8 ± 1.0
HOMA-IR^b						
	15.0 ± 1.6	4.1 ± 0.5*	15.5 ± 0.8	5.7 ± 0.4* [§]	6.2 ± 0.4 [§]	3.6 ± 0.1 [§]
Lipids (mg/dL)^a						
Triglyceride	31.5 ± 3.2	5.0 ± 0.8*	45.5 ± 0.3 [§]	7.3 ± 0.2* [§]	8.4 ± 2.3	7.3 ± 1.0 [§]
Cholesterol	28.3 ± 2.0	15.9 ± 2.8*	45.9 ± 2.6 [§]	30.3 ± 0.3*	22.8 ± 0.5	26.0 ± 2.8
Free fatty acid	42.7 ± 3.4	64.6 ± 4.5*	48.1 ± 3.5	57.1 ± 2.5* [§]	41.2 ± 2.4	44.9 ± 0.9
Cholesteryl Ester	32.1 ± 0.9	26.7 ± 0.5	55.8 ± 0.8 [§]	41.0 ± 1.4 [§]	31.9 ± 1.3	34.5 ± 3.4
Phosphatidylcholine	64.2 ± 3.8	42.2 ± 2.1*	107.9 ± 4.9 [§]	68.8 ± 2.9*	52.7 ± 2.3 [§]	59.5 ± 4.4
Lyso-phosphatidylcholine	9.3 ± 0.3	5.5 ± 0.5*	10.6 ± 0.3	6.7 ± 0.2	6.6 ± 0.6	5.7 ± 0.7
Phosphatidylethanolamine	4.0 ± 0.5	2.6 ± 0.4*	8.2 ± 0.9 [§]	5.6 ± 0.1 [§]	2.2 ± 0.4 [§]	3.0 ± 0.0
Sphingomyelin	6.8 ± 0.3	3.9 ± 2.0*	10.3 ± 0.9 [§]	10.2 ± 0.4 [§]	6.9 ± 0.1	8.2 ± 0.9

^aValues are expressed as the mean ± SEM (n = 4 mice per group).

^bHomeostatic Model Assessment of Insulin Resistance, calculated as (fasted glucose (mM) × fasted insulin (pU/mL))/22.5.

*Indicates significance from unrestricted diet at *p* < 0.01 as determined by one-way ANOVA.

[§]Indicates significance from unrestricted standard diet at *p* < 0.01 as determined by one-way ANOVA.

Table 4 Pearsons Bivariate Correlations of bodyweight, macronutrient intake and plasma metabolites

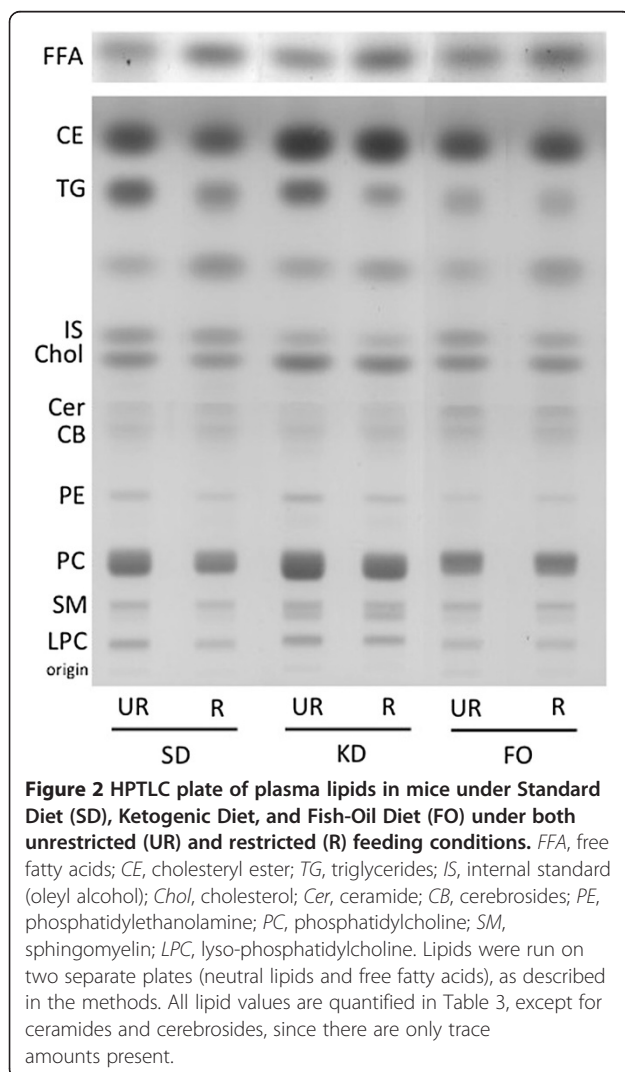
	Bodyweight	Calorie Intake	Fat Intake	Carbo-hydrate Intake	Glucose	Ketone	Insulin	Adipo-nectin	Tri-glyceride	Cholesterol	Free fatty acids	Cholesteryl Ester	Phos-phatidyl-choline	Lyso-phos-phatidyl-choline	Phosphatidyl-ethanolamine
Calorie Intake	.751**														
Fat Intake	.494*	.024													
Carbohydrate Intake	.004	.496*	-.725**												
Glucose	.922**	.707**	.601**	-.019											
Ketone	-.610**	-.860**	.266	-.619**	.478*										
Insulin	.677**	.687**	.319	.202	.745**	-.495*									
Adiponectin	-.640**	-.523**	-.318	.107	-.611**	.414*	-.282								
Triglyceride	.863**	.653**	.568**	-.006	.940**	-.477*	.684**	-.597**							
Cholesterol	.654**	.262	.837**	-.522**	.772**	-.005	.536**	-.469*	.811**						
Free Fatty Acids	-.194	-.265	.099	-.144	-.168	.175	-.077	.123	-.200	-.142					
Cholesteryl Ester	.560**	.079	.922**	-.673**	.667**	.133	.372	-.396	.704**	.944**	.009				
Phosphatidylcholine	.358	.117	.437*	-.317	.401	.004	.306	.400	.480*	.674**	-.164	.550**			
Lyso-phosphatidylcholine	.843**	.661*	.588**	-.020	.939**	-.437*	.772**	-.537**	.957**	.834**	-.221	.706**	.536**		
Phosphatidyl-ethanolamine	.555**	.122	.880**	-.500*	.690**	.150	.481*	-.303	.734**	.916**	-.083	.903**	.666**	.755**	
Sphingomyelin	.250	-.087	.722**	-.691**	.405	.377	.324	-.209	.370	.814**	-.160	.760**	.621**	.492*	.734**

* $p < 0.05$, two tailed t test.

** $p < 0.01$, two tailed t test.

Influence of diet on plasma lipids

We examined plasma lipid distribution using HPTLC (Figure 2). The changes in plasma triglyceride levels were generally correlated with the changes in plasma glucose levels, with the CR groups exhibiting the lowest levels of circulating triglycerides and glucose (Table 3). The KD-UR group had the highest levels of triglycerides, whereas the FO-UR group exhibited triglyceride levels that were similar to the levels measured in the CR groups. Total free cholesterol levels were reduced in the SD-R and KD-R groups compared to their unrestricted controls, although cholesterol levels in the KD-R group were similar to those in the SD-UR group. The cholesterol levels in both fish-oil groups were similar to those seen in the SD-UR group. Cholesteryl ester levels follow a similar pattern to free cholesterol. While cholesteryl ester levels were not significantly decreased in the SD-R compared to the SD-UR, the KD groups had the highest levels of cholesteryl esters,



with the KD-UR having significantly higher levels compared to the KD-R. Cholesteryl ester levels were unchanged in the fish-oil groups, and were similar to those in the SD-UR group. Free fatty acid levels (FFA) were higher in the SD-R and KD-R groups than in their respective UR groups.

Phosphatidylcholine (PC) levels were reduced in the SD-R and KD-R groups compared to their respective unrestricted diets, but were higher in the KD group. The fish-oil groups had similar PC levels. Lyso-phosphatidylcholine (LPC) levels were reduced slightly in the SD-R group, and were similar across the rest of the groups (Table 3). Plasma phosphatidylethanolamine (PE) levels were lowest in the fish-oil groups, and were significantly reduced in the SD-R and KD-R groups compared to the unrestricted diets, although the KD groups had the highest overall levels of PE. Sphingomyelin (SM) levels were highest in the KD groups, and were significantly reduced in the SD-R compared to the SD-UR. There was no difference between the fish-oil groups, and they were comparable to the levels seen in the SD-UR. Plasma ceramide and cerebroside levels were also evaluated, however they were present only in trace amounts and were not quantified (Figure 2).

Major Predictors of body weight, glucose, ketone, and triglyceride levels

We pooled the dietary groups to independently assess the predictive strength of independent variables (Figure 3). The assumptions of bivariate linear regression with ANOVA were met, according to established criteria [75]. The strongest independent predictor (highest coefficient of determination) for final body weight, plasma glucose, ketone, and triglyceride levels is displayed in Figure 3 for each of the variables assessed. We found that while calories and ketones moderately predict body weight, blood glucose level ($R^2 = 0.850$; 95% CI = 1.000 ± 0.186 ; $t_{22} = 11.157$; $y = 16.798 + 1.000x$) was the strongest predictor of final body weight during the study. The amount of dietary fat and dietary carbohydrates consumed were not significant indicators of final body weight.

While we found that circulating glucose levels were the strongest predictor of final body weight, calorie intake was the most significant predictor of blood glucose level ($R^2 = 0.500$; 95% CI = 1.304 ± 0.5777 ; $t_{22} = 4.687$; $y = -6.390 + 1.304x$). Dietary fat intake also moderately predicted plasma glucose levels, whereas dietary carbohydrate intake was not a significant predictor of glucose levels.

The most important predictor of circulating ketones was reduced calorie intake ($R^2 = -0.740$; 95% CI = -0.399 ± 0.105 ; $t_{22} = -7.904$; $y = 6.301 - 0.399x$). While lowering calories had the greatest effect on increasing ketone levels, lowering dietary carbohydrate intake also had a significant, but

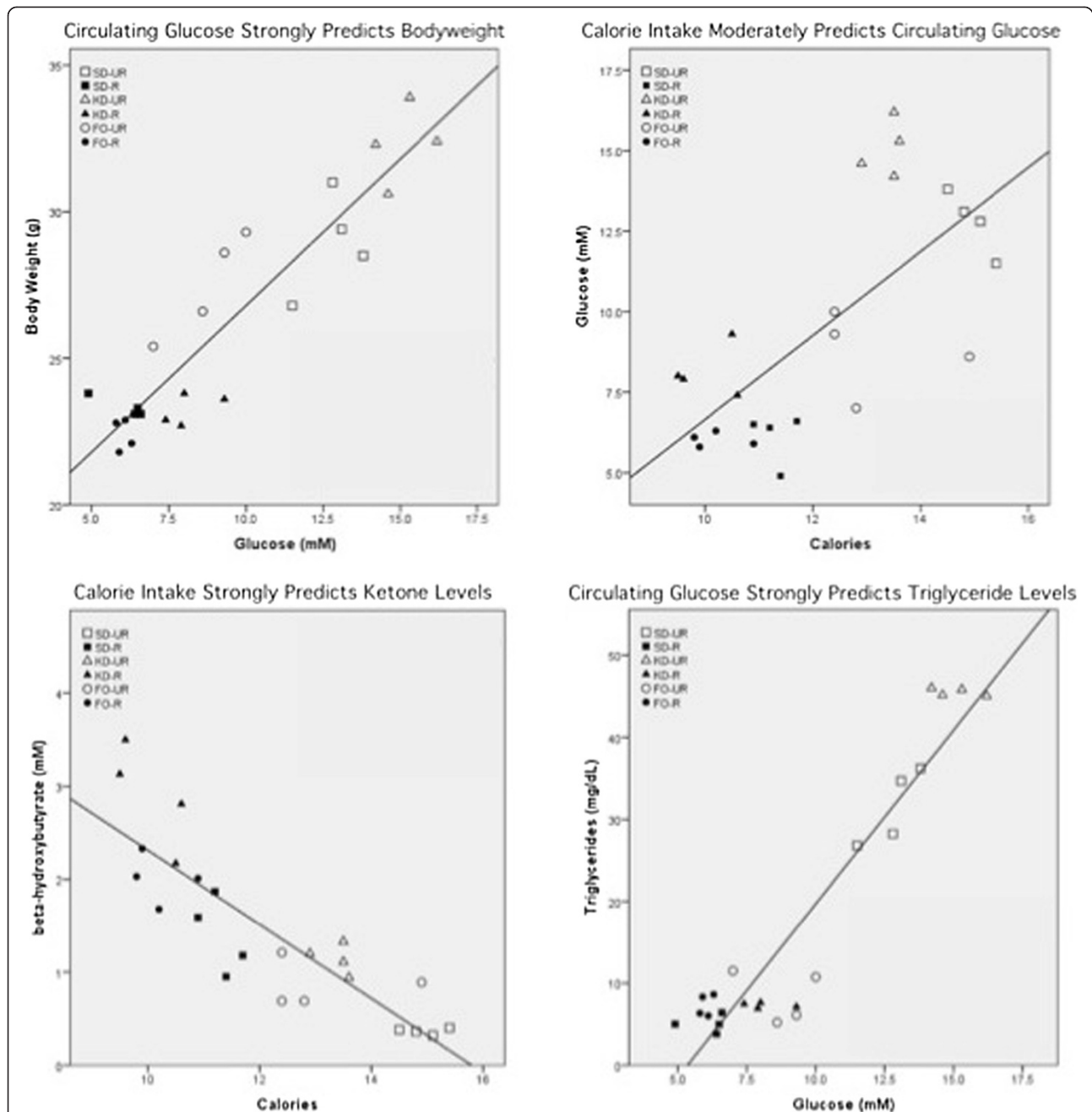


Figure 3 Linear regression analyses of body weight, glucose, β -hydroxybutyrate, and triglyceride levels in mice. The strongest predictor (highest coefficient of determination) for each dependent variable is plotted. Irrespective of diet, glucose levels most strongly predict body weight and triglyceride levels, calories most strongly predict glucose and ketone levels, and dietary fat intake most strongly predicts cholesterol levels. *SD-UR*, standard diet unrestricted; *SD-R*, standard diet restricted; *KD-UR*, ketogenic diet unrestricted; *KD-R*, ketogenic diet restricted; *FO-UR*, fish-oil supplemented diet unrestricted; *FO-R*, fish-oil supplemented diet restricted.

moderate influence ($R^2 = 0.384$; 95% CI = -0.591 ± 0.332 ; $t_{22} = -3.700$; $y = 2.018 - 0.591x$) on ketone levels. Glucose level was a weak predictor of ketone levels, and surprisingly, dietary fat intake was not a significant predictor of circulating ketone levels.

Circulating glucose levels strongly predicted circulating triglyceride levels ($R^2 = 0.883$; 95% CI = 4.223 ± 0.672 ; $t_{22} = 12.870$; $y = -22.631 + 4.233x$). Calorie and dietary fat intake moderately predicted triglyceride levels, whereas ketone levels were a weak predictor of triglyceride levels.

Dietary carbohydrate intake was not a predictor of circulating triglyceride levels.

Discussion

We found that the macronutrient composition of a diet greatly affected the plasma metabolite profile of C57BL/6J mice when administered *ad libitum*. A ketogenic diet administered *ad libitum* promoted high glucose levels, weight gain, and a hyperlipidemic profile in mice, whereas fish-oil supplementation decreased bodyweight, glucose levels, and yielded a normolipidemic profile. Administration of these diets under CR led to weight loss, increased insulin sensitivity, decreased glucose levels, increased ketone levels, and promoted a normolipidemic lipid profile. When administered under CR, the influence of the composition of the diet on the metabolic profiles of the mice was minimized, yielding similar metabolic profiles across all groups. Thus, a restriction of total energy intake can correct weight gain or a hyperlipidemic profile from these dietary therapies in B6 mice.

We confirmed previous studies that the KD-UR does not lead to long-term weight loss in mice when they are fasted prior to diet initiation [13,18,76]. Our work supports the notion that “a calorie is not a calorie”, as the KD-UR group gained approximately 10% body weight despite consuming 10% less in metabolizable calorie intake, compared to the SD-UR. However, our results challenge the metabolic advantage theory of the KD-UR, which states that isocaloric diets low in carbohydrates lead to greater weight loss compared to isocaloric diets of different composition [77]. This was unsurprising, given that dietary fat is metabolized more efficiently than are dietary carbohydrates and proteins [78]. The seeming discrepancy between metabolizable calorie intake and body weight is most likely due to differences in energy utilization between the different dietary groups, including factors such as obligatory thermogenesis, microbial fermentation, diet induced thermogenesis, and basal metabolism (including energy expenditure) [79].

In addition to the increased body weight under the KD-UR, the plasma profile of the KD-UR group suggests that the diet is unhealthy [80-83]. The plasma profile of the KD-UR mice is similar to a previously published report utilizing a high-fat, high-sucrose diet in the same strain of mice [35]. The atherogenic lipids triglycerides, cholesterol, and cholesteryl esters were highest in KD-UR group. A KD-UR diet also elevated these lipids in children with epilepsy [28]. The presence of high circulating glucose levels in the KD-UR group, which has also been reported in other studies of rodents on high-fat, low-carbohydrate diets [84,85], could further increase the risk of atherogenesis, as glucose can contribute to endothelial dysfunction [86,87]. Glucose can be raised in high-fat diets devoid of carbohydrates with excess calorie

intake through gluconeogenesis, which occurs indirectly through oxidation of fatty acids to acetyl-CoA [88]. The KD-UR group also had the highest levels of PC, LPC, PE, and SM. It has been suggested that a PC to free cholesterol ratio (mol/mol) of less than 1 is a risk factor for atherosclerosis [89]. The calculated PC/cholesterol ratios in all of the groups (both restricted and unrestricted) were similar, and ranged from 1.5-1.75 (data not shown). LPC levels have been shown to be positively associated with obesity [90]. PE levels are suggested to be positively associated with atherosclerotic complications [91]. SM in plasma is associated with an increased risk of coronary artery disease [92,93]. Our data are consistent with the observations for LPC, PE, and SM. These findings, together with our observations in B6 mice, indicate that consumption of the KD in unrestricted amounts can have adverse effects on health-related biomarkers.

Administration of the KD in restricted amounts mitigated the hyperlipidemic plasma profile of the B6 mice. In addition to lowering triglycerides, cholesterol, phospholipids (PC, LPC, and PE), and glucose, the KD-R also lowered fasting insulin levels. Reduced levels of circulating insulin is antiatherogenic [94]. Plasma ketone levels were also highest in the KD-R group. Ketones are therapeutic against a variety of neurological diseases and cancer [1,48,95-97]. It is well known that ketones can replace glucose as an energy metabolite and can protect the brain from hypoglycemia [16,98,99]. Our previous findings, in conjunction with the results in the present study, suggest that the therapeutic efficacy of the KD for epilepsy and brain cancer will likely be best when the diet is administered in restricted than unrestricted amounts [13,18,20].

While the KD-UR increased body weight and was associated with a hyperlipidemic plasma profile, we were surprised to find that the FO-UR diet caused changes in body weight and plasma metabolites that were similar to those seen in the CR groups. We cannot completely rule out that these results are a consequence of decreased food palatability in the FO-UR group, as the FO-UR group had reduced calorie intake compared to the SD-UR. The FO-UR group, however, consumed a similar number of calories as the KD-UR group after the fast (16.9 ± 2.3 (FO-UR) calories versus 17.0 ± 0.3 (KD-UR) calories) and throughout the study, and did not have observable aversion to the food. We hypothesized that increased levels of the adipokine adiponectin might be responsible for the increased insulin sensitivity and decreased body weight in the FO-UR group despite feeding *ad libitum*, since supplementation of fish-oil is associated with increased levels of adiponectin [100,101]. Interestingly, we found that adiponectin was not elevated in the FO-UR group, suggesting that adiponectin by itself was not responsible for the increase in insulin sensitivity or the CR-like profile of the FO-UR mice. Omega-3 fatty acids and their metabolites can produce

changes in the activity of peroxisome proliferator-activated receptor (PPAR) α and γ , along with directly binding to and modulating the activity of sterol receptor element binding proteins (SREBP), which contribute to modulating lipid and glucose metabolism [102,103]. Omega-3 fatty acids and their metabolites (epoxide derivatives, docosanoids, resolvins, and neuroprotectins) reduce triglyceride levels, adiposity, and inflammation while improving insulin sensitivity in rodents and humans [104,105]. Thus, the observed plasma profile of the FO-UR mice that mimicked the CR groups were likely due to a multitude of mechanisms regulated by omega-3 fatty acids that are still not fully elucidated.

All of the dietary groups were combined in a post-hoc analysis to examine the relationship among body weight, dietary intake, and plasma profile. Our findings indicated that blood glucose was the strongest predictor of body weight in mice and was highly correlated with body weight. This observation is consistent with previous studies in humans, though the human studies did not review dietary intake [106,107]. We found that intake of specific macronutrients was not predictive of final bodyweight. This observation questions the utility of advocating for diets devoid in specific macronutrients to control body weight [7,108]. In terms of predicting glucose levels, total calorie intake was only moderately predictive suggesting that multiple factors modulate blood glucose levels in mice. Our findings suggest that restriction of total calorie intake will be more effective for reducing glucose levels and body weight in mice than will be the restriction of any particular macronutrient under *ad libitum* feeding. The reduction of total calories was strongly predictive of elevated ketone levels. Reduced carbohydrate intake contributed moderately to increased ketone levels. From a physiological perspective, given that the body has a large reservoir of lipid stores and a small reservoir of glycogen stores, it should not be surprising that restriction of energy intake and carbohydrates will quickly diminish glycogen stores, leading to beta-oxidation of lipids for energy [109]. Dietary strategies that promote beta-oxidation of lipids, through either restriction of overall energy intake or severe carbohydrate restriction, would promote ketosis. Since circulating glucose strongly predicted plasma triglyceride levels, dietary strategies that lower blood glucose levels should have significant effects on promoting cardiovascular and overall health [110,111].

Conclusions

The macronutrient composition of various diets plays an important role when the diet is fed *ad libitum*, as our data showed for body weight, hormones, and plasma metabolites. CR, however, has a dominant and independent effect on body weight, hormones, and plasma metabolites, compared to macronutrient composition. Our data

suggest that CR may be more appropriate for improving health outcomes than shifting macronutrient ratios, especially when using dietary therapy to treat metabolic diseases [13,18].

Abbreviations

SD: Standard diet; KD: Ketogenic diet; FO: Fish-oil supplemented diet; UR: Unrestricted; R: Restricted; AL: *Ad libitum*; CR: Calorie restriction; FFA: Free fatty acids; PC: Phosphatidylcholine; LPC: Lyso-phosphatidylcholine; PE: Phosphatidylethanolamine; SM: Sphingomyelin.

Competing interests

The authors declare they have no competing interests.

Authors' contributions

JJM carried out the diet implementation, hormone analysis, assisted with lipid analysis, performed the statistical analysis, and drafted the manuscript. NT carried out the diet implementation, lipid and metabolite analysis, and helped to draft the manuscript. TNS conceived the study, and participated in its design and coordination and helped to draft the manuscript. All authors read and approved the final manuscript.

Acknowledgements

This work was supported in part from NIH grant NS055195, the Jasse Walsh Scholarship (JJM) and the Boston College Research Expense Fund.

Received: 31 January 2014 Accepted: 6 May 2014

Published: 22 May 2014

References

1. Stafstrom CE, Rho JM: **The ketogenic diet as a treatment paradigm for diverse neurological disorders.** *Front Pharmacol* 2012, **3**:59.
2. Schroeder JE, Richardson JC, Virley DJ: **Dietary manipulation and caloric restriction in the development of mouse models relevant to neurological diseases.** *Biochim Biophys Acta* 1802, 2010:840–846.
3. Baranano KW, Hartman AL: **The ketogenic diet: uses in epilepsy and other neurologic illnesses.** *Curr Treat Options Neurol* 2008, **10**:410–419.
4. World Health Organization, Food and Agriculture Organization of the United Nations: **Diet, Nutrition, and the Prevention of Chronic Diseases: Report of a Joint WHO/FAO Expert Consultation.** Geneva: World Health Organization; 2003.
5. Kashiwaya Y, Bergman C, Lee JH, Wan R, King MT, Mughal MR, Okun E, Clarke K, Mattson MP, Veech RL: **A ketone ester diet exhibits anxiolytic and cognition-sparing properties, and lessens amyloid and tau pathologies in a mouse model of Alzheimer's disease.** *Neurobiol Aging* 2013, **34**:1530–1539.
6. Hooper L, Abdelhamid A, Moore HJ, Douthwaite W, Skeaff CM, Summerbell CD: **Effect of reducing total fat intake on body weight: systematic review and meta-analysis of randomised controlled trials and cohort studies.** *BMJ* 2012, **345**:e7666.
7. Shai I, Schwarzfuchs D, Henkin Y, Shahar DR, Witkow S, Greenberg I, Golan R, Fraser D, Bolotin A, Vardi H, Tangi-Rozental O, Zuk-Ramot R, Sarusi B, Brickner D, Schwartz Z, Sheiner E, Marko R, Katorza E, Thiery J, Fiedler GM, Blüher M, Stumvoll M, Stampfer MJ: **Weight loss with a low-carbohydrate, Mediterranean, or low-fat diet.** *N Engl J Med* 2008, **359**:229–241.
8. Schwarzfuchs D, Golan R, Shai I: **Four-year follow-up after two-year dietary interventions.** *N Engl J Med* 2012, **367**:1373–1374.
9. Hooper L, Summerbell CD, Thompson R, Sills D, Roberts FG, Moore HJ, Davey Smith G: **Reduced or modified dietary fat for preventing cardiovascular disease.** *Cochrane Database Syst Rev* 2012, **5**:CD002137.
10. Volek JS, Phinney SD, Forsythe CE, Quann EE, Wood RJ, Puglisi MJ, Kraemer WJ, Bibus DM, Fernandez ML, Feinman RD: **Carbohydrate restriction has a more favorable impact on the metabolic syndrome than a low fat diet.** *Lipids* 2009, **44**:297–309.
11. Greene AE, Todorova MT, Seyfried TN: **Perspectives on the metabolic management of epilepsy through dietary reduction of glucose and elevation of ketone bodies.** *J Neurochem* 2003, **86**:529–537.
12. Mantis JG, Fritz CL, Marsh J, Heinrichs SC, Seyfried TN: **Improvement in motor and exploratory behavior in Rett syndrome mice with restricted ketogenic and standard diets.** *Epilepsy Behav* 2009, **15**:133–141.

13. Seyfried TN, Sanderson TM, El-Abbadi MM, McGowan R, Mukherjee P: **Role of glucose and ketone bodies in the metabolic control of experimental brain cancer.** *Br J Cancer* 2003, **89**:1375–1382.
14. Seyfried TN, Kiebish MA, Marsh J, Shelton LM, Huysentruyt LC, Mukherjee P: **Metabolic management of brain cancer.** *Biochim Biophys Acta* 1807, 2011:577–594.
15. Maurer GD, Brucker DP, Bahr O, Harter PN, Hattingen E, Walenta S, Mueller-Klieser W, Steinbach JP, Rieger J: **Differential utilization of ketone bodies by neurons and glioma cell lines: a rationale for ketogenic diet as experimental glioma therapy.** *BMC Cancer* 2011, **11**:315.
16. Veech RL: **The therapeutic implications of ketone bodies: the effects of ketone bodies in pathological conditions: ketosis, ketogenic diet, redox states, insulin resistance, and mitochondrial metabolism.** *Prostaglandins Leukot Essent Fatty Acids* 2004, **70**:309–319.
17. Bough KJ, Valiyil R, Han FT, Eagles DA: **Seizure resistance is dependent upon age and calorie restriction in rats fed a ketogenic diet.** *Epilepsy Res* 1999, **35**:21–28.
18. Mantis JG, Centeno NA, Todorova MT, McGowan R, Seyfried TN: **Management of multifactorial idiopathic epilepsy in EL mice with caloric restriction and the ketogenic diet: role of glucose and ketone bodies.** *Nutr Metab (Lond)* 2004, **1**:11.
19. Eagles DA, Boyd SJ, Kotak A, Allan F: **Calorie restriction of a high-carbohydrate diet elevates the threshold of PTZ-induced seizures to values equal to those seen with a ketogenic diet.** *Epilepsy Res* 2003, **54**:41–52.
20. Zhou W, Mukherjee P, Kiebish MA, Markis WT, Mantis JG, Seyfried TN: **The calorically restricted ketogenic diet, an effective alternative therapy for malignant brain cancer.** *Nutr Metab (Lond)* 2007, **4**:5.
21. Zuccoli G, Marcello N, Pisanello A, Servadei F, Vaccaro S, Mukherjee P, Seyfried TN: **Metabolic management of glioblastoma multiforme using standard therapy together with a restricted ketogenic diet: Case Report.** *Nutr Metab (Lond)* 2010, **7**:33.
22. Fine EJ, Segal-Isaacson CJ, Feinman RD, Herszkopf S, Romano MC, Tomuta N, Bontempo AF, Negassa A, Sparano JA: **Targeting insulin inhibition as a metabolic therapy in advanced cancer: a pilot safety and feasibility dietary trial in 10 patients.** *Nutrition* 2012, **28**:1028–1035.
23. Joo NS, Lee DJ, Kim KM, Kim BT, Kim CW, Kim KN, Kim SM: **Ketonuria after fasting may be related to the metabolic superiority.** *J Korean Med Sci* 2010, **25**:1771–1776.
24. Westman EC, Yancy WS, Edman JS, Tomlin KF, Perkins CE: **Effect of 6-month adherence to a very low carbohydrate diet program.** *Am J Med* 2002, **113**:30–36.
25. Yancy WS Jr, Olsen MK, Guyton JR, Bakst RP, Westman EC: **A low-carbohydrate, ketogenic diet versus a low-fat diet to treat obesity and hyperlipidemia: a randomized, controlled trial.** *Ann Intern Med* 2004, **140**:769–777.
26. Dashti HM, Al-Zaid NS, Mathew TC, Al-Mousawi M, Talib H, Asfar SK, Behbahani AI: **Long term effects of ketogenic diet in obese subjects with high cholesterol level.** *Mol Cell Biochem* 2006, **286**:1–9.
27. Klement RJ, Frobel T, Albers T, Fikenzler S, Prinzhausen J, Kaemmerer U: **A pilot case study on the impact of a self-prescribed ketogenic diet on biochemical parameters and running performance in healthy and physically active individuals.** *Nutr Med* 2013, **1**:10.
28. Kwiterovich PO Jr, Vining EP, Pyzik P, Skolasky R Jr, Freeman JM: **Effect of a high-fat ketogenic diet on plasma levels of lipids, lipoproteins, and apolipoproteins in children.** *JAMA* 2003, **290**:912–920.
29. Tendler D, Lin S, Yancy WS Jr, Mavropoulos J, Sylvestre P, Rockey DC, Westman EC: **The effect of a low-carbohydrate, ketogenic diet on nonalcoholic fatty liver disease: a pilot study.** *Dig Dis Sci* 2007, **52**:589–593.
30. Brehm BJ, Seeley RJ, Daniels SR, D'Alessio DA: **A randomized trial comparing a very low carbohydrate diet and a calorie-restricted low fat diet on body weight and cardiovascular risk factors in healthy women.** *J Clin Endocrinol Metab* 2003, **88**:1617–1623.
31. Meckling KA, O'Sullivan C, Saari D: **Comparison of a low-fat diet to a low-carbohydrate diet on weight loss, body composition, and risk factors for diabetes and cardiovascular disease in free-living, overweight men and women.** *J Clin Endocrinol Metab* 2004, **89**:2717–2723.
32. Volek JS, Sharman MJ, Gomez AL, Scheett TP, Kraemer WJ: **An isoenergetic very low carbohydrate diet improves serum HDL cholesterol and triacylglycerol concentrations, the total cholesterol to HDL cholesterol ratio and postprandial lipemic responses compared with a low fat diet in normal weight, normolipidemic women.** *J Nutr* 2003, **133**:2756–2761.
33. De Vivo DC: **How to use other drugs (steroids) and the ketogenic diet.** In *Antiepileptic Drug Therapy in Pediatrics*. Edited by Morselli PL, Pippenger CE, Penry JK. New York: Raven Press; 1983:283–293.
34. Gilbert DL, Pyzik PL, Freeman JM: **The ketogenic diet: seizure control correlates better with serum beta-hydroxybutyrate than with urine ketones.** *J Child Neurol* 2000, **15**:787–790.
35. Kennedy AR, Pissios P, Otu H, Roberson R, Xue B, Asakura K, Furukawa N, Marino FE, Liu FF, Kahn BB, Libermann TA, Maratos-Flier E: **A high-fat, ketogenic diet induces a unique metabolic state in mice.** *Am J Physiol Endocrinol Metab* 2007, **292**:E1724–E1739.
36. Badman MK, Kennedy AR, Adams AC, Pissios P, Maratos-Flier E: **A very low carbohydrate ketogenic diet improves glucose tolerance in ob/ob mice independently of weight loss.** *Am J Physiol Endocrinol Metab* 2009, **297**:E1197–E1204.
37. Kaul N, Kreml R, Austria JA, Richard MN, Edell AL, Dibrov E, Hirono S, Zettler ME, Pierce GN: **A comparison of fish oil, flaxseed oil and hempseed oil supplementation on selected parameters of cardiovascular health in healthy volunteers.** *J Am Coll Nutr* 2008, **27**:51–58.
38. Zulyniak MA, Perreault M, Gerling C, Spriet LL, Mutch DM: **Fish oil supplementation alters circulating eicosanoid concentrations in young healthy men.** *Metabolism* 2013, **62**:1107–1113.
39. Woodman RJ, Mori TA, Burke V, Puddey IB, Watts GF, Beilin LJ: **Effects of purified eicosapentaenoic and docosahexaenoic acids on glycemic control, blood pressure, and serum lipids in type 2 diabetic patients with treated hypertension.** *Am J Clin Nutr* 2002, **76**:1007–1015.
40. Mori TA, Burke V, Puddey IB, Watts GF, O'Neal DN, Best JD, Beilin LJ: **Purified eicosapentaenoic and docosahexaenoic acids have differential effects on serum lipids and lipoproteins, LDL particle size, glucose, and insulin in mildly hyperlipidemic men.** *Am J Clin Nutr* 2000, **71**:1085–1094.
41. Mori TA, Bao DQ, Burke V, Puddey IB, Watts GF, Beilin LJ: **Dietary fish as a major component of a weight-loss diet: effect on serum lipids, glucose, and insulin metabolism in overweight hypertensive subjects.** *Am J Clin Nutr* 1999, **70**:817–825.
42. Dagnelie PC, Rietveld T, Swart GR, Stijnen T, van den Berg JW: **Effect of dietary fish oil on blood levels of free fatty acids, ketone bodies and triacylglycerol in humans.** *Lipids* 1994, **29**:41–45.
43. Degirolamo C, Kelley KL, Wilson MD, Rudel LL: **Dietary n-3 LCPUFA from fish oil but not alpha-linolenic acid-derived LCPUFA confers atheroprotection in mice.** *J Lipid Res* 2010, **51**:1897–1905.
44. Murali G, Milne GL, Webb CD, Stewart AB, McMillan RP, Lyle BC, Hulver MW, Saraswathi V: **Fish oil and indomethacin in combination potentially reduce dyslipidemia and hepatic steatosis in LDLR(–/–) mice.** *J Lipid Res* 2012, **53**:2186–2197.
45. Yang ZH, Miyahara H, Mori T, Doisaki N, Hatanaka A: **Beneficial effects of dietary fish-oil-derived monounsaturated fatty acids on metabolic syndrome risk factors and insulin resistance in mice.** *J Agric Food Chem* 2011, **59**:7482–7489.
46. Mori T, Kondo H, Hase T, Tokimitsu I, Murase T: **Dietary fish oil upregulates intestinal lipid metabolism and reduces body weight gain in C57BL/6J mice.** *J Nutr* 2007, **137**:2629–2634.
47. Wong SH, Nestel PJ, Trimble RP, Storer GB, Illman RJ, Topping DL: **The adaptive effects of dietary fish and safflower oil on lipid and lipoprotein metabolism in perfused rat liver.** *Biochim Biophys Acta* 1984, **792**:103–109.
48. Maalouf M, Rho JM, Mattson MP: **The neuroprotective properties of calorie restriction, the ketogenic diet, and ketone bodies.** *Brain Res Rev* 2009, **59**:293–315.
49. Hursting SD, Smith SM, Lashinger LM, Harvey AE, Perkins SN: **Calories and carcinogenesis: lessons learned from 30 years of calorie restriction research.** *Carcinogenesis* 2010, **31**:83–89.
50. Weiss EP, Fontana L: **Caloric restriction: powerful protection for the aging heart and vasculature.** *Am J Physiol Heart Circ Physiol* 2011, **301**:H1205–H1219.
51. Wu P, Shen Q, Dong S, Xu Z, Tsien JZ, Hu Y: **Calorie restriction ameliorates neurodegenerative phenotypes in forebrain-specific presenilin-1 and presenilin-2 double knockout mice.** *Neurobiol Aging* 2008, **29**:1502–1511.
52. Fontana L, Meyer TE, Klein S, Holloszy JO: **Long-term calorie restriction is highly effective in reducing the risk for atherosclerosis in humans.** *Proc Natl Acad Sci U S A* 2004, **101**:6659–6663.
53. Holloszy JO, Fontana L: **Caloric restriction in humans.** *Exp Gerontol* 2007, **42**:709–712.

54. Fontana L, Villareal DT, Weiss EP, Racette SB, Steger-May K, Klein S, Holloszy JO: **Calorie restriction or exercise: effects on coronary heart disease risk factors. A randomized, controlled trial.** *Am J Physiol Endocrinol Metab* 2007, **293**:E197–E202.
55. Johnson JB, Sumner CA, Cutler RG, Martin B, Hyun DH, Dixit VD, Pearson M, Nassar M, Telljohann R, Maudsley S, Carlson O, John S, Laub DR, Mattson MP: **Alternate day calorie restriction improves clinical findings and reduces markers of oxidative stress and inflammation in overweight adults with moderate asthma.** *Free Radic Biol Med* 2007, **42**:665–674.
56. Knopp RH, Magee MS, Raisys V, Benedetti T, Bonet B: **Hypocaloric diets and ketogenesis in the management of obese gestational diabetic women.** *J Am Coll Nutr* 1991, **10**:649–667.
57. Mahoney LB, Denny CA, Seyfried TN: **Caloric restriction in C57BL/6J mice mimics therapeutic fasting in humans.** *Lipids Health Dis* 2006, **5**:13.
58. Greene AE, Todorova MT, McGowan R, Seyfried TN: **Caloric restriction inhibits seizure susceptibility in epileptic EL mice by reducing blood glucose.** *Epilepsia* 2001, **42**:1371–1378.
59. Anson RM, Guo Z, de Cabo R, Iyun T, Rios M, Hagepanos A, Ingram DK, Lane MA, Mattson MP: **Intermittent fasting dissociates beneficial effects of dietary restriction on glucose metabolism and neuronal resistance to injury from calorie intake.** *Proc Natl Acad Sci U S A* 2003, **100**:6216–6220.
60. Bough KJ, Rho JM: **Anticonvulsant mechanisms of the ketogenic diet.** *Epilepsia* 2007, **48**:43–58.
61. Cullingford TE: **The ketogenic diet; fatty acids, fatty acid-activated receptors and neurological disorders.** *Prostaglandins Leukot Essent Fatty Acids* 2004, **70**:253–264.
62. McEvoy C, Young IS, Woodside JV: **Fish, n-3 polyunsaturated fatty acids, and cardiovascular disease.** In *Nutritional Health: Strategies for Disease Prevention*. Edited by Temple NJ, Wilson T, Jacobs DRJ. New York: Humana Press; 2012. ISBN Third.
63. Vijay-Kumar M, Vanegas SM, Patel N, Aitken JD, Ziegler TR, Ganji V: **Fish oil rich diet in comparison to saturated fat rich diet offered protection against lipopolysaccharide-induced inflammation and insulin resistance in mice.** *Nutr Metab (Lond)* 2011, **8**:16.
64. Simopoulos AP: **Omega-3 fatty acids in inflammation and autoimmune diseases.** *J Am Coll Nutr* 2002, **21**:495–505.
65. Simopoulos AP: **Omega-3 fatty acids and cardiovascular disease: The epidemiological evidence.** *Environ Health Prev Med* 2002, **6**:203–209.
66. Calder PC: **n-3 polyunsaturated fatty acids, inflammation, and inflammatory diseases.** *Am J Clin Nutr* 2006, **83**:1505S–1519S.
67. Williamson DH, Mellanby J, Krebs HA: **Enzymic determination of D (-)-beta-hydroxybutyric acid and acetoacetic acid in blood.** *Biochem J* 1962, **82**:90–96.
68. Baek RC, Martin DR, Cox NR, Seyfried TN: **Comparative analysis of brain lipids in mice, cats, and humans with Sandhoff disease.** *Lipids* 2009, **44**:197–205.
69. Macala LJ, Yu RK, Ando S: **Analysis of brain lipids by high performance thin-layer chromatography and densitometry.** *J Lipid Res* 1983, **24**:1243–1250.
70. Faul F, Erdfelder E, Lang AG, Buchner A: **G*Power 3: a flexible statistical power analysis program for the social, behavioral, and biomedical sciences.** *Behav Res Methods* 2007, **39**:175–191.
71. Reed DR, Tordoff MG, Friedman MI: **Enhanced acceptance and metabolism of fats by rats fed a high-fat diet.** *Am J Physiol* 1991, **261**:R1084–R1088.
72. Trout KK, Homko C, Tkacs NC: **Methods of measuring insulin sensitivity.** *Biol Res Nurs* 2007, **8**:305–318.
73. Lansang MC, Williams GH, Carroll JS: **Correlation between the glucose clamp technique and the homeostasis model assessment in hypertension.** *Am J Hypertens* 2001, **14**:51–53.
74. Maeda N, Shimomura I, Kishida K, Nishizawa H, Matsuda M, Nagaretani H, Furuyama N, Kondo H, Takahashi M, Arita Y, Komuro R, Ouchi N, Kihara S, Tochino K, Horie M, Takeda S, Aoyama T, Funahashi T, Matsuzawa Y: **Diet-induced insulin resistance in mice lacking adiponectin/ACRP30.** *Nat Med* 2002, **8**:731–737.
75. Lang TA, Secic M: **How to report Statistics in Medicine: Annotated Guidelines for Authors, Editors, and Reviewers.** Philadelphia: American College of Physicians; 1997.
76. Borghjid S, Feinman RD: **Response of C57Bl/6 mice to a carbohydrate-free diet.** *Nutr Metab (Lond)* 2012, **9**:69.
77. Feinman RD, Fine EJ: **"A calorie is a calorie" violates the second law of thermodynamics.** *Nutr J* 2004, **3**:9.
78. Jequier E: **Pathways to obesity.** *Int J Obes Relat Metab Disord* 2002, **26**(Suppl 2):S12–S17.
79. MacLean WC, Warwick P: **Food and Agriculture Organization of the United Nations: Food energy: Methods of Analysis and Conversion Factors: Report of a Technical Workshop, Rome, 3–6 December 2002.** Food and Agriculture Organization of the United Nations: Rome; 2003.
80. Carlson LA, Bottiger LE: **Ischaemic heart-disease in relation to fasting values of plasma triglycerides and cholesterol: Stockholm prospective study.** *Lancet* 1972, **1**:865–868.
81. Kannel WB, Castelli WP, Gordon T: **Cholesterol in the prediction of atherosclerotic disease. New perspectives based on the Framingham study.** *Ann Intern Med* 1979, **90**:85–91.
82. Hokanson JE, Austin MA: **Plasma triglyceride level is a risk factor for cardiovascular disease independent of high-density lipoprotein cholesterol level: a meta-analysis of population-based prospective studies.** *J Cardiovasc Risk* 1996, **3**:213–219.
83. Ansar S, Koska J, Reaven PD: **Postprandial hyperlipidemia, endothelial dysfunction and cardiovascular risk: focus on incretins.** *Cardiovasc Diabetol* 2011, **10**:61.
84. Bielohuby M, Sisley S, Sandoval D, Herbach N, Zengin A, Fischereder M, Menhofer D, Stoehr BJ, Stemmer K, Wanke R, Tschöp MH, Seeley RJ, Bidlingmaier M: **Impaired glucose tolerance in rats fed low-carbohydrate, high-fat diets.** *Am J Physiol Endocrinol Metab* 2013, **305**:E1059–E1070.
85. Ellenbroek JH, van Dijk L, Tons HA, Rabelink TJ, Carlotti F, Ballieux BE, de Koning EJ: **Long-term ketogenic diet causes glucose intolerance and reduced beta and alpha cell mass but no weight loss in mice.** *Am J Physiol Endocrinol Metab* 2014, **306**:E552–E558.
86. Beckman JA, Creager MA, Libby P: **Diabetes and atherosclerosis: epidemiology, pathophysiology, and management.** *JAMA* 2002, **287**:2570–2581.
87. Kanter JE, Johansson F, LeBoeuf RC, Bornfeldt KE: **Do glucose and lipids exert independent effects on atherosclerotic lesion initiation or progression to advanced plaques?** *Circ Res* 2007, **100**:769–781.
88. Weinman EO, Strisower EH, Chaikoff IL: **Conversion of fatty acids to carbohydrate; application of isotopes to this problem and role of the Krebs cycle as a synthetic pathway.** *Physiol Rev* 1957, **37**:252–272.
89. Kuksis A, Roberts A, Thompson JS, Myher JJ, Geher K: **Plasma phosphatidylcholine/free cholesterol ratio as an indicator for atherosclerosis.** *Arteriosclerosis* 1983, **3**:389–397.
90. Barber MN, Risis S, Yang C, Meikle PJ, Staples M, Febbraio MA, Bruce CR: **Plasma lysophosphatidylcholine levels are reduced in obesity and type 2 diabetes.** *PLoS One* 2012, **7**:e41456.
91. Kunz F, Stummvoll W: **Plasma phosphatidylethanolamine—a better indicator in the predictability of atherosclerotic complications?** *Atherosclerosis* 1971, **13**:413–425.
92. Jiang XC, Paultre F, Pearson TA, Reed RG, Francis CK, Lin M, Berglund L, Tall AR: **Plasma sphingomyelin level as a risk factor for coronary artery disease.** *Arterioscler Thromb Vasc Biol* 2000, **20**:2614–2618.
93. Schlitt A, Blankenberg S, Yan D, von Gizycki H, Buerke M, Werdan K, Bickel C, Lackner KJ, Meyer J, Rupprecht HJ, Jiang XC: **Further evaluation of plasma sphingomyelin levels as a risk factor for coronary artery disease.** *Nutr Metab (Lond)* 2006, **3**:5.
94. Salt IP: **Examining the role of insulin in the regulation of cardiovascular health.** *Future Cardiol* 2013, **9**:39–52.
95. Shimazu T, Hirschey MD, Newman J, He W, Shirakawa K, Le Moan N, Grueter CA, Lim H, Saunders LR, Stevens RD, Newgard CB, Faresse RV Jr, de Cabo R, Ulrich S, Akassoglou K, Verdin E: **Suppression of oxidative stress by beta-hydroxybutyrate, an endogenous histone deacetylase inhibitor.** *Science* 2013, **339**:211–214.
96. Gasior M, Rogawski MA, Hartman AL: **Neuroprotective and disease-modifying effects of the ketogenic diet.** *Behav Pharmacol* 2006, **17**:431–439.
97. Rho JM, Sankar R: **The ketogenic diet in a pill: is this possible?** *Epilepsia* 2008, **49**(Suppl 8):127–133.
98. VanItallie TB, Nufert TH: **Ketones: metabolism's ugly duckling.** *Nutr Rev* 2003, **61**:327–341.
99. Drenick EJ, Alvarez LC, Tamasi GC, Brickman AS: **Resistance to symptomatic insulin reactions after fasting.** *J Clin Invest* 1972, **51**:2757–2762.
100. Neschen S, Morino K, Rossbacher JC, Pongratz RL, Cline GW, Sono S, Gillum M, Shulman GI: **Fish oil regulates adiponectin secretion by a peroxisome proliferator-activated receptor-gamma-dependent mechanism in mice.** *Diabetes* 2006, **55**:924–928.

101. Flachs P, Mohamed-Ali V, Horakova O, Rossmeisl M, Hosseinzadeh-Attar MJ, Hensler M, Ruzickova J, Kopecky J: **Polyunsaturated fatty acids of marine origin induce adiponectin in mice fed a high-fat diet.** *Diabetologia* 2006, **49**:394–397.
102. Deckelbaum RJ, Worgall TS, Seo T: **n-3 fatty acids and gene expression.** *Am J Clin Nutr* 2006, **83**:1520S–1525S.
103. Davidson MH: **Mechanisms for the hypotriglyceridemic effect of marine omega-3 fatty acids.** *Am J Cardiol* 2006, **98**:271–331.
104. Lombardo YB, Chicco AG: **Effects of dietary polyunsaturated n-3 fatty acids on dyslipidemia and insulin resistance in rodents and humans: a review.** *J Nutr Biochem* 2006, **17**:1–13.
105. Oh DY, Talukdar S, Bae EJ, Imamura T, Morinaga H, Fan W, Li P, Lu WJ, Watkins SM, Olefsky JM: **GPR120 is an omega-3 fatty acid receptor mediating potent anti-inflammatory and insulin-sensitizing effects.** *Cell* 2010, **142**:687–698.
106. Folsom AR, Jacobs DR Jr, Wagenknecht LE, Winkhart SP, Yunis C, Hilner JE, Savage PJ, Smith DE, Flack JM: **Increase in fasting insulin and glucose over seven years with increasing weight and inactivity of young adults. The CARDIA Study. Coronary Artery Risk Development in Young Adults.** *Am J Epidemiol* 1996, **144**:235–246.
107. Qian Y, Lin Y, Zhang T, Bai J, Chen F, Zhang Y, Luo S, Shen H: **The characteristics of impaired fasting glucose associated with obesity and dyslipidaemia in a Chinese population.** *BMC Public Health* 2010, **10**:139.
108. Shai I, Stampfer MJ: **Weight-loss diets—can you keep it off?** *Am J Clin Nutr* 2008, **88**:1185–1186.
109. Flatt JP: **The difference in the storage capacities for carbohydrate and for fat, and its implications in the regulation of body weight.** *Ann N Y Acad Sci* 1987, **499**:104–123.
110. O'Keefe JH, Bell DS: **Postprandial hyperglycemia/hyperlipidemia (postprandial dysmetabolism) is a cardiovascular risk factor.** *Am J Cardiol* 2007, **100**:899–904.
111. Ford ES: **The metabolic syndrome and mortality from cardiovascular disease and all-causes: findings from the National Health and Nutrition Examination Survey II Mortality Study.** *Atherosclerosis* 2004, **173**:309–314.

doi:10.1186/1743-7075-11-23

Cite this article as: Meidenbauer *et al.*: Influence of a ketogenic diet, fish-oil, and calorie restriction on plasma metabolites and lipids in C57BL/6J mice. *Nutrition & Metabolism* 2014 **11**:23.

Submit your next manuscript to BioMed Central and take full advantage of:

- Convenient online submission
- Thorough peer review
- No space constraints or color figure charges
- Immediate publication on acceptance
- Inclusion in PubMed, CAS, Scopus and Google Scholar
- Research which is freely available for redistribution

Submit your manuscript at
www.biomedcentral.com/submit

