

RESEARCH

Open Access



Moderate calorie restriction to achieve normal weight reverses β -cell dysfunction in diet-induced obese mice: involvement of autophagy

Xiuying Gao^{1,2}, Dien Yan^{1,2}, Yinan Zhao^{1,2}, Hong Tao^{1,2} and Yingsheng Zhou^{1,2*}

Abstract

Background: Severe calorie restriction (CR) is shown to improve or even reverse β -cell dysfunction in patients with obesity and type 2 diabetes mellitus. However, whether mild to moderate CR can reverse β -cell dysfunction induced by obesity and the underlying mechanism remain unclear. Autophagy plays an important role in maintaining mass, architecture and function of β -cells. While the impact of CR on β -cell autophagy is unknown. This study aims to investigate the effects of moderate CR on β -cell function and autophagy activity in diet-induced obese (DIO) mice.

Methods: DIO C57BL/6 mice were subjected to 3 weeks of switching to normal chow (HF \rightarrow NC group) or normal chow with 40 % CR (HF \rightarrow NC CR group). Then hematoxylin-eosin and immunohistochemistry staining were performed to observe β -cell morphology. β -cell function was evaluated by intraperitoneal glucose tolerance test *in vivo* and static GSIS (glucose-stimulated insulin secretion) in isolated islets. β -cell autophagy activity was determined by transmission electron microscope and western blot.

Results: In the HF \rightarrow NC CR group, CR normalized body weights, completely restored glucose tolerance, early-phase and second-phase insulin secretion, insulin sensitivity, and islet size. CR also normalized insulin content and glucose-stimulated insulin secretion in isolated islets *in vitro*. Furthermore, β -cell autophagy level was increased in the HF \rightarrow NC CR group, but AMPK phosphorylation remained unchanged. Although HF \rightarrow NC mice achieved moderate weight loss and normal glucose tolerance, their insulin secretion was not improved compared with obese control mice, and additionally, β -cell autophagy was not activated in these mice.

Conclusions: Moderate (40 %) CR to achieve normal weight reversed β -cell dysfunction and insulin resistance, and restored glucose homeostasis in DIO mice. Furthermore, the up-regulation of β -cell autophagy may play a role in this process, independent of AMPK activation.

Keywords: Calorie restriction, β -cell function, Autophagy

Background

The prevalence of obesity and associated health consequences, including type 2 diabetes mellitus (T2DM), continues to increase [1, 2]. Obesity not only causes insulin resistance, but also leads to pancreatic β -cell damage which manifests as the impaired insulin secretion in response to glucose and nonfuel stimuli rather than reduced β -cell mass [3]. Diet control can effectively reduce body weight and delay the progression of obesity to T2DM [4].

However, the method of dietary intervention has not been standardized, and it is important to find an effective and feasible dietary intervention strategy to improve or even reverse obesity-induced β -cell dysfunction.

Calorie or dietary restriction (CR) can significantly improve β -cell function in subjects with obesity and T2DM. Clinical studies have demonstrated an improvement in insulin secretion in morbidly obese patients with T2DM, after 1 week of very low-calorie diet (VLCD) of 400 kcal/day or 3 weeks of 500 kcal/day [5, 6]. Furthermore, another study have indicated that insulin secretion rate and first-phase insulin response are normalized after 8 weeks of VLCD (600 kcal/day) in patients with T2DM [7]. All

* Correspondence: yszhou@ccmu.edu.cn

¹Department of Endocrinology and Metabolism, Beijing Anzhen Hospital, Capital Medical University, Beijing 100029, China

²Beijing Institute of Heart, Lung, and Blood Vessel Diseases, Beijing 100029, China

these clinical studies apply severe CR, which is difficult to be accepted by most patients. However, the effects of mild-to-moderate CR on β -cell function in subjects with obesity have not been well investigated, and related studies mainly focus on the improvement of insulin resistance [8, 9]. Studies of CR in obese animal models often use 30–40 % (moderate) CR with a focus on insulin resistance, however, the effect of CR on β -cells has not been studied extensively [10, 11]. Therefore, whether mild-to-moderate CR can reverse β -cell dysfunction induced by obesity has not yet been demonstrated and the molecular mechanisms mediating this beneficial effect remain unclear.

Autophagy as a cellular degradation-recycling system for aggregated proteins and damaged organelles can be induced under energy deprivation conditions such as starvation [12, 13]. Autophagy plays an important role in maintaining mass, architecture and function of β -cells [14]. A study has shown an increased β -cell autophagy in high-fat-fed mice, and inductive β -cell autophagy acts as a compensatory mechanism in response to obesity [13]. However, the impact of weight loss or CR on β -cell autophagy remains unknown.

This study used diet-induced obese (DIO) mice subjected to 3 weeks of switching to normal chow (HF \rightarrow NC) or normal chow with 40 % CR (HF \rightarrow NC CR), and

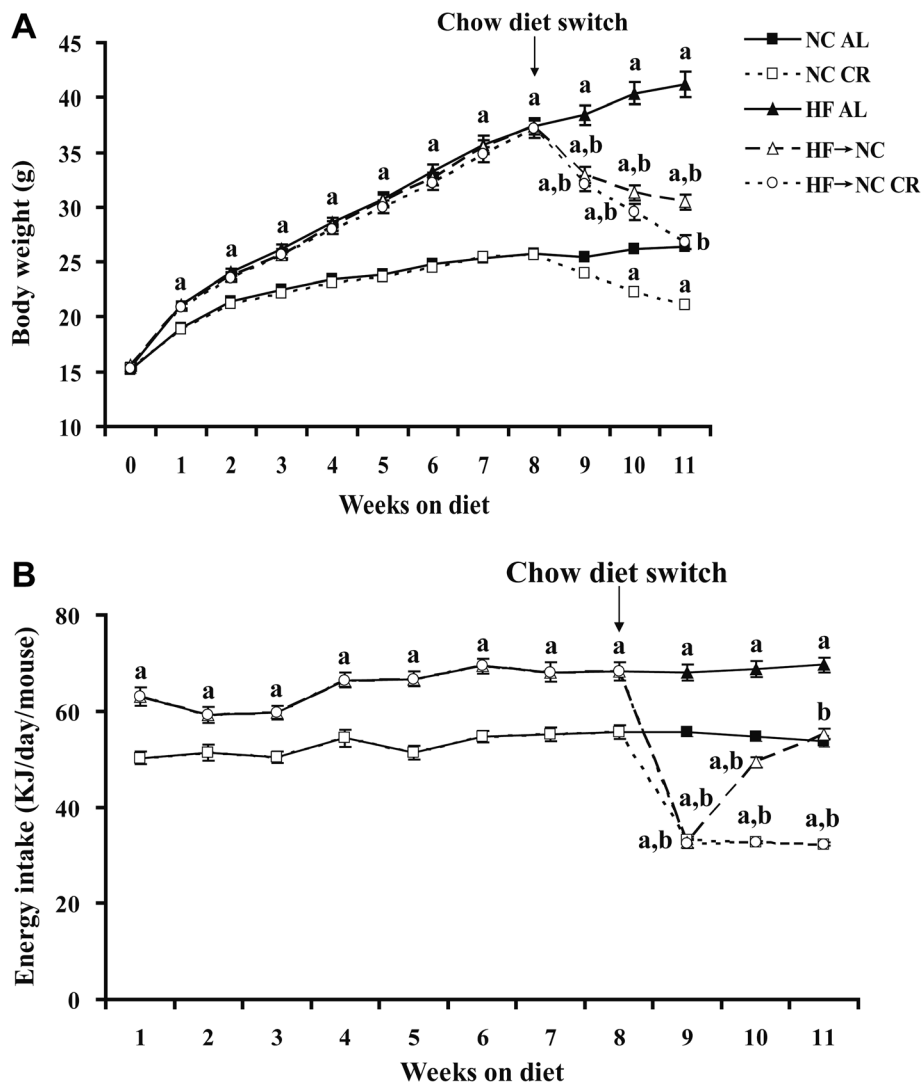


Fig. 1 The body weight and energy intake of the five groups during the experiment. Male C57BL/6 mice were fed either NC or HF for 8 weeks beginning at age 4 weeks, then they were divided into five groups: NC AL, NC CR (40 % CR), HF AL, HF \rightarrow NC, HF \rightarrow NC CR (40 % CR), these treatments continued for another 3 weeks. **a** the body weight and **(b)** energy intake were evaluated throughout the experimental period. Data were presented as means \pm SE, $n = 20$. **a** indicates $P < 0.05$ versus NC AL group; **b** indicates $P < 0.05$ versus HF AL group. Abbreviations: NC, normal chow; HF, high-fat diet; AL, ad libitum; CR, calorie restriction

then investigated whether moderate (40 %) CR could reverse β -cell dysfunction induced by obesity. Furthermore, we also sought to explore whether β -cell autophagy was involved in this process.

Methods

Animals and diets

Four weeks old male C57BL/6 mice were purchased from Vital River Laboratories (Beijing, CHN). They were random fed high-fat diet (HF) (Research Diets D12492; 60 % KJ from fat, 20 % KJ from carbohydrate, and 20 % KJ from protein, 21.9 KJ/g, $n = 60$) or normal chow (NC) (Research Diets D12450; 10 % KJ from fat, 70 % KJ from carbohydrate, and 20 % KJ from protein, 16.1 KJ/g, $n = 40$) for 8 weeks. Then they were randomly divided into the following five groups ($n = 20$ /group): NC AL (ad libitum), NC CR, HF AL, HF \rightarrow NC (HF switching to NC, ad libitum), HF \rightarrow NC CR. The food intakes of both CR groups were 60 % of that of NC AL group (Fig. 1b). These treatments continued for 3 weeks, because at that time body weights of HF \rightarrow NC CR mice reduced to the same level as NC AL mice (Fig. 1a). Food intake and body weight were measured on a daily and weekly basis, respectively. All procedures were approved by the Animal Ethics Commission of Capital Medical University.

Metabolic and plasma parameters

After overnight fasting and anesthetization, the body length, body weight, and abdominal circumference were measured, and then Lee index was calculated [15]. Besides, epididymal fat, liver and pancreas were harvested and weighted. Plasma triglycerides, total cholesterol, non-esterified fatty acids (NEFA) and adiponectin concentrations were determined by commercially available kits (Wako for lipid profiles; Alpcos for adiponectin).

Intraperitoneal glucose tolerance test (IPGTT)

After a 16 h fasting, 25 % glucose (2 g/kg) was administered intraperitoneally. Tail blood samples were collected at 0, 15, 30, 60, and 120 min, and blood glucose was measured by a portable glucometer (ContourTMTS). Plasma insulin level was measured by ELISA (Alpcos). Insulinogenic index was calculated to assess early-phase insulin secretion according to the formula: [15 min insulin (μ U/mL)-fasting insulin] / [15 min glucose (mmol/L)-fasting glucose] [16]. Area under the curve (AUC) for glucose and AUC for insulin (representing second-phase insulin secretion) were calculated using the trapezoid method. Insulin resistance was estimated by homeostasis model assessment of insulin resistance (HOMA-IR).

Histological analysis

The samples of pancreas were fixed in 10 % neutralized formalin and then embedded in paraffin and cutted into

5 μ m sections. Standard hematoxylin and eosin (HE) stainings were performed. The pancreas sections were subjected to immunohistochemistry (IHC) staining with primary antibody against insulin (1:400, Santa Cruz). Images were captured with a microscope (ECLIPSE80i/90i).

Transmission electron microscopy (TEM)

After fixation in 3 % glutaraldehyde, pancreas tail samples were postfixed with 1 % OsO₄ and embedded in Epon812. Ultrathin sections were mounted and stained with uranyl acetate/lead citrate (JEM-1400).

Islet isolation

Islets were isolated from overnight fasted mice by the collagenase digestion technique and followed by overnight culture for recovery [17]. To determine islet size, images were taken using a DMI 4000B inverted microscope (Leica) and analyzed by Image-Pro Plus 3.0 software.

Glucose-stimulated insulin secretion and insulin content measurements

Static glucose-stimulated insulin secretion (GSIS) experiment was performed as described [17]. Briefly, islets were starved in Krebs-Ringer bicarbonate-HEPES buffer (KRBH) for 1 h. Then batches of 10 size-matched islets were pipetted into 24-well plates and treated with 2 ml of KRBH containing 2.8 mM or 16.7 mM glucose for 1 h. The supernatant was collected for assay of insulin release. For determination of islet insulin contents, aliquots of five islets were lysed in acid-ethanol solution [18]. Insulin was measured by ELISA as described above.

Western blot analysis

Groups of 300 freshly isolated islets ($n = 6$) were pelleted and resuspended in 40 μ L of lysis buffer. Equal amounts of protein (30 μ g) were resolved by electrophoresis and then transferred to PVDF membranes. The membranes were probed overnight at 4 $^{\circ}$ C with primary antibodies against LC3 (1:500), p62 (1:1000) (both MBL), beclin-1 (1:1000), pT172-AMPK α (1:500), and AMPK α (1:500) (all Cell Signaling), and then incubated with Dylight-labeled secondary antibodies (1:10000, KPL) for 1 h. Images were quantified by the Odyssey infrared imaging system (LI-COR Biosciences).

Statistical analysis

Measurement data was expressed as means \pm SE. One-way ANOVA with LSD or S-N-K post hoc testing were employed for multiple comparisons. Categorical variables were presented as percentages and analyzed by Chi-squared test. $P < 0.05$ was considered statistically significant.

Results

Body weight, organs weight and plasma parameters

As shown in Fig. 1a, after 8 weeks of HF feeding, DIO models were successfully established [19], with a 45.1 % marked increase in body weight compared with control mice, meanwhile, the energy intake was significantly increased by 22.8 % (Fig. 1b). After 3 weeks of CR intervention, HF → NC CR mice achieved normal weight. Although the HF → NC group achieved a 26.1 % weight reduction compared with HF AL mice, they remained more obese than NC AL mice.

As shown in Table 1, HF AL mice showed dramatically increased abdominal circumference and significantly increased weights of epididymal fat, liver and pancreas, along with hyperlipidemia and hypo adiponectinemia. In the HF → NC CR group, these parameters were normalized or even lower than those in the NC AL group. Although adiposity and metabolic characteristics were improved in the HF → NC group, the epididymal fat weight, blood lipid profile, and plasma adiponectin level still did not return to normal levels. Besides, NC CR group showed the lowest body weight and metabolic parameters, however, the pancreas weight, plasma total cholesterol, NEFA and adiponectin levels were unaffected by 3 weeks of CR.

Effects of CR on pancreatic islet morphology and β -cell area

HE and IHC staining demonstrated hypertrophic islets and increased β -cell area (positive staining area for

insulin) in the pancreas of HF AL mice (Fig. 2a and b), which were improved in the HF → NC mice and normalized in the HF → NC CR mice. Similar trends were also observed in isolated islets *ex vivo* (Fig. 3a). Quantitative analysis revealed that islet size was increased by 8.1 % in HF AL mice and reduced to normal size in both the HF → NC and HF → NC CR groups (Fig. 3b). Additionally, NC CR mice had the smallest islets.

Effects of CR on glucose tolerance, insulin sensitivity, insulin secretion and insulin content

As shown in Fig. 4a, b and Table 1, HF AL mice developed glucose intolerance and insulin resistance. Fasting blood glucose, AUC for glucose, fasting plasma insulin, and HOMA-IR in HF AL mice were increased by 60.7 %, 1.0-fold, 3.1-fold, and 5.9-fold, respectively. The AUC for insulin (second-phase insulin secretion) was increased by 53.8 %, whereas the insulinogenic index (early-phase insulin secretion) tended to decrease, though no statistically different from the NC AL group (Table 1). After CR intervention, all these parameters were normalized in the HF → NC CR group. HF → NC mice showed normal glucose tolerance and higher insulin levels, implying that insulin resistance remained higher than in the NC AL group. Furthermore, they also showed unimproved early-phase insulin secretion compared to the HF AL group. NC CR mice presented normal plasma insulin levels and unchanged early-phase insulin secretion, but blood glucose levels at 15, 30 and

Table 1 Metabolic characteristics of the five groups at the end of the study

Parameter	NC AL	NC CR	HF AL	HF → NC	HF → NC CR
Body weight (BW, g)	26.35 ± 0.38	21.12 ± 0.33 *	41.23 ± 1.16 *	30.49 ± 0.70 ***	26.83 ± 0.67 **
Abdominal circumference (cm)	7.4 ± 0.2	6.6 ± 0.1 *	9.0 ± 0.2 *	7.6 ± 0.1 **	6.9 ± 0.1 ***
Lee index	323.18 ± 2.89	313.09 ± 3.67 *	332.83 ± 2.43 *	321.82 ± 2.75 **	320.38 ± 3.00 **
Epididymal fat weight (%BW)	1.41 ± 0.11	0.20 ± 0.06 *	4.94 ± 0.19 *	2.37 ± 0.25 ***	1.26 ± 0.32 **
Liver weight (mg)	1115.0 ± 20.0	828.0 ± 47.3 *	1263.1 ± 74.1 *	1052.2 ± 45.4 **	882.0 ± 35.2 ***
Pancreas weight (mg)	184.0 ± 20.0	186.3 ± 9.7	295.0 ± 14.9 *	211.1 ± 13.8 **	194.4 ± 11.1 **
Fasting blood glucose (mmol/L)	4.9 ± 1.2	3.6 ± 1.8	7.9 ± 2.2 *	5.8 ± 0.7 **	5.7 ± 1.5 **
Fasting plasma insulin (ng/mL)	0.18 ± 0.05	0.13 ± 0.08	0.74 ± 0.14 *	0.29 ± 0.07 ***	0.20 ± 0.07 **
AUC _{glc0-120} (mmol/L × min)	880.1 ± 119.4	423.6 ± 109.1 *	1768.3 ± 166.8 *	1077.2 ± 136.5 **	569.9 ± 100.0 ***
AUC _{ins0-120} (ng/mL × min)	22.66 ± 1.92	18.96 ± 4.22	34.86 ± 2.34 *	25.74 ± 3.86 **	24.54 ± 2.70 **
Insulinogenic index	0.56 ± 0.07	0.96 ± 0.21	0.32 ± 0.22	0.59 ± 0.09	0.93 ± 0.22 **
HOMA-IR	0.87 ± 0.12	0.58 ± 0.17	5.97 ± 1.00 *	1.54 ± 0.11 **	1.17 ± 0.25 **
Plasma triglycerides (mg/dl)	30.28 ± 2.16	19.63 ± 2.40 *	43.86 ± 3.88 *	38.13 ± 2.97 *	16.47 ± 1.19 ***
Plasma total cholesterol (mg/dl)	70.60 ± 3.59	58.97 ± 3.85	152.17 ± 6.65 *	83.72 ± 4.60 ***	65.34 ± 3.30 **
Plasma NEFA (mmol/L)	0.79 ± 0.06	0.63 ± 0.05	1.30 ± 0.06 *	1.03 ± 0.10 ***	0.67 ± 0.06 **
Plasma adiponectin (μ g/ml)	18.94 ± 1.18	18.71 ± 3.17	11.82 ± 1.64 *	12.80 ± 1.85 *	17.71 ± 1.49 **

Data are presented as mean ± SE, n = 8 ~ 16. * indicates $P < 0.05$ versus NC AL group; ** indicates $P < 0.05$ versus HF AL group
Abbreviations: NC normal chow, HF high-fat diet, AL ad libitum, CR calorie restriction, NEFA non-esterified fatty acid

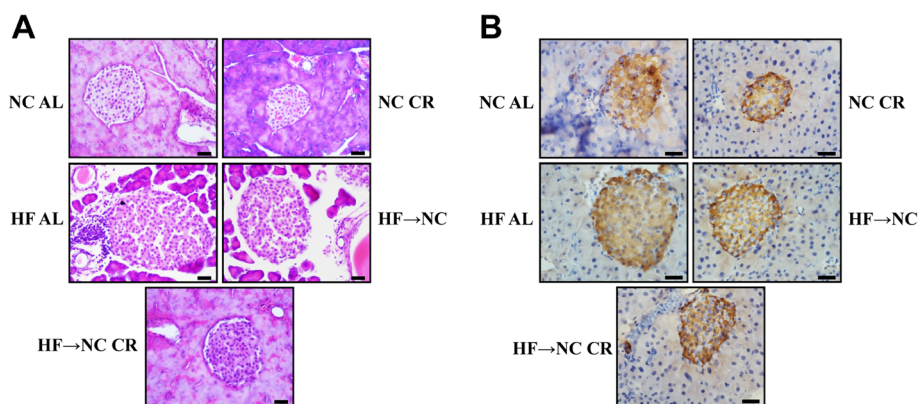


Fig. 2 Effects of CR on pancreatic islet morphology and β -cell area. **a** representative images of H&E staining of pancreatic sections. Scale bars: 20 μ m. **b** pancreatic sections were immunostained for insulin and the positive staining area represented β -cell area. Scale bars: 20 μ m

60 min of IPGTT were reduced compared with the NC AL group.

To eliminate the interference of insulin resistance *in vivo*, we evaluated GSIS in isolated islets *ex vivo*. As shown in Fig. 5a, HF AL islets had defective insulin secretion, with a 30.6 % increase in basal insulin secretion and a 52.1 % reduction of insulin secretion in response to 16.7 mM glucose compared with NC AL group. For HF \rightarrow NC CR islets, both basal and high glucose-stimulated insulin secretion were completely restored. Although basal insulin secretion returned to normal in HF \rightarrow NC islets, high glucose-stimulated insulin secretion was still unimproved relative to the HF AL group. The stimulation index (SI) was calculated by dividing high glucose-stimulated insulin secretion by basal insulin secretion. HF AL islets displayed the lowest SI, which was not enhanced in HF \rightarrow NC islets but fully recovered in HF \rightarrow NC CR islets (Fig. 5b). Insulin content in isolated islets increased by 28.3 % in the HF AL group and reduced to normal levels in both the HF \rightarrow NC and

HF \rightarrow NC CR groups (Fig. 5c), in accordance with the results of the IHC analysis. NC CR islets showed the lowest insulin content and basal insulin secretion, however, high glucose-stimulated insulin secretion was comparable with NC AL islets.

Effects of CR on autophagy and expression of phosphorylated adenosine monophosphate-activated protein kinase (AMPK) in islets

Next, we detected the protein expressions of beclin-1, LC3II/LC3I (two specific markers for induction and formation of autophagosomes) and p62 (a marker being degraded by autophagy) in freshly isolated islets. Our findings showed significantly increased LC3II/LC3I ratio and beclin-1 level with remarkably decreased p62 accumulation in the NC CR, HF AL and HF \rightarrow NC CR islets, indicating β -cell autophagy was activated in these three groups, but there were no differences in autophagy levels among these three groups. Autophagy levels in HF \rightarrow NC islets were not different from those of the NC AL

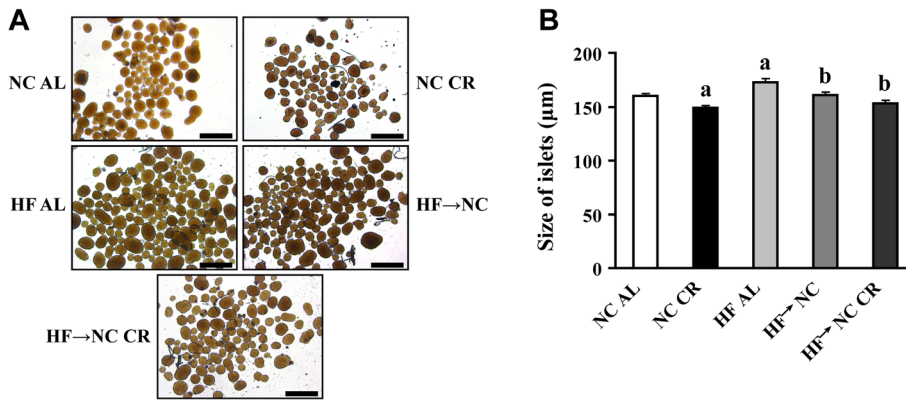


Fig. 3 Effects of CR on the size of isolated islets. **a** representative images of isolated islets after overnight culture for recovery. Scale bars: 500 μ m. **b** the mean size of islets determined by measuring of 250 ~ 350 islets (from 5 mice) per group. *a* indicates $P < 0.05$ versus NC AL group; *b* indicates $P < 0.05$ versus HF AL group

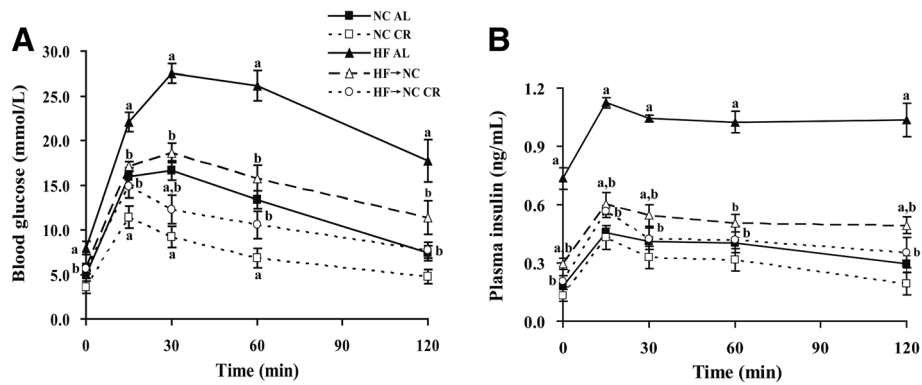


Fig. 4 Effects of CR on glucose tolerance, early-phase and second-phase insulin secretion and insulin sensitivity. Blood glucose (a) and plasma insulin (b) were measured at times 0, 15, 30, 60, and 120 min in response to a glucose challenge (i.p. 2 g/kg) in 16-h fasted conscious mice. Data were presented as means \pm SE, $n = 6-8$ mice/group. *a* indicates $P < 0.05$ versus NC AL group; *b* indicates $P < 0.05$ versus HF AL group. Abbreviations: i.p., intraperitoneally; AUC, area under the curve; HOMA-IR, homeostasis model assessment of insulin resistance

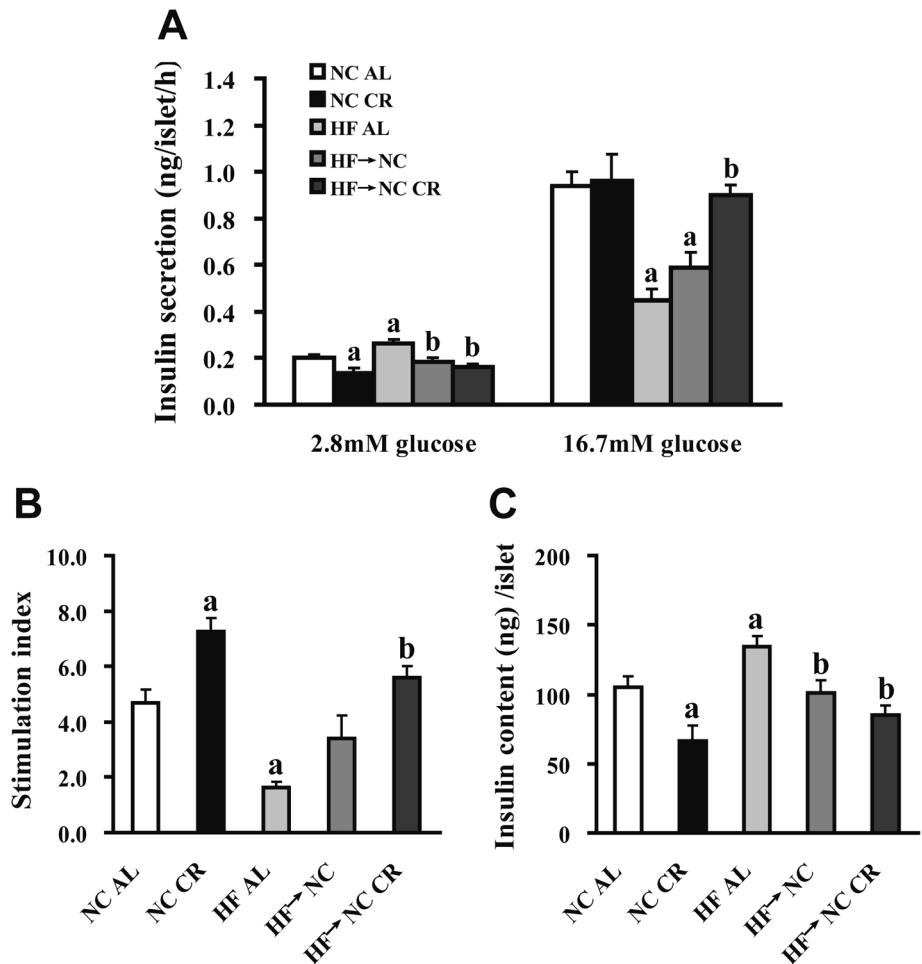


Fig. 5 Effects of CR on glucose-stimulated insulin secretion and insulin content in isolated islets. **a** glucose-stimulated insulin secretion was measured in isolated islets (10 islets per concentration in triplicates) at 2.8 and 16.7 mM glucose. **b** the stimulation index calculated by dividing insulin secretion in response to 16.7 mM glucose by that in response to 2.8 mM glucose. **c** insulin content of isolated islets was measured in batches of 5 islets in triplicates. Data were presented as means \pm SE, $n = 5$ mice/group. *a* indicates $P < 0.05$ versus NC AL group; *b* indicates $P < 0.05$ versus HF AL group

group (Fig. 7a-d). These results were further confirmed by TEM, which also showed an increased presence of autophagosomes in β -cells from the NC CR, HF AL and HF \rightarrow NC CR groups (Fig. 6)

Because both CR groups showed activated β -cell autophagy, and autophagy activity was closely related with the energy metabolism level, we further examined the level of AMPK phosphorylation. The results showed that AMPK α phosphorylation was up-regulated in NC CR islets only, however, no significant differences were found among the other four groups (Fig. 7e and f).

Discussion

In our study, chronic HF feeding was used to induce obesity in male C57BL/6 mice, which were then subjected to 3 weeks of switching to NC or 40 % CR to induce weight loss. Our findings demonstrated that moderate (40 %) CR to achieve normal weight could reverse β -cell dysfunction and insulin resistance, and restore glucose tolerance in DIO mice. The activation of β -cell autophagy might participate in this process.

After 12 weeks of HF feeding, HF AL mice became remarkably obese, and showed glucose intolerance and insulin resistance, accompanying by hypertrophic islets and increased β -cell area. Moreover, their early-phase

insulin secretion tended to decrease and second-phase insulin secretion elevated significantly *in vivo*. This phenomenon is also commonly observed in patients with IGT (impaired glucose tolerance) or early-stage T2DM. *Ex vivo* isolated islets had increased insulin content and defective insulin secretion that manifested as enhanced basal insulin secretion and reduced high glucose-stimulated insulin secretion, suggesting β -cell dysfunction in HF mice was not due to insufficient insulin storage but to a defective secretion. These findings were consistent with previous studies [3, 20] that noted this secretory dysfunction was possibly caused by the reduced ATP/Ca²⁺ signaling. *In vitro* experiments eliminated the interference of confounding factors *in vivo*, such as insulin resistance, therefore it would be more accurate to reflect β -cell function. Furthermore, we observed activated β -cell autophagy in HF AL mice, this was in line with a previous study [13]. Several reasons could contribute to this phenomenon. Insulin resistance, free fatty acids (FFA), and misfolded proteins caused by endoplasmic reticulum stress are increased in obesity, and all of these factors can activate β -cell autophagy [21]. Obesity-induced activation of β -cell autophagy is considered as a compensatory response, providing cells with a safety mechanism to eliminate damaged mitochondria and/or other cellular components and to avoid cell apoptosis under insulin-resistant states and high FFA concentrations [13]. However, although enhanced β -cell autophagy played a protective role in HF AL mice, it was not strong enough to compensate for β -cell damage, therefore HF AL mice still had β -cell dysfunction.

It is reported that treating obesity by CR using a low fat diet attenuates the rebound weight gain compared with CR using an HF diet [22]. This was the basis of why we subjected DIO mice to CR with normal chow rather than CR with an HF diet. After 3 weeks of CR, HF \rightarrow NC CR mice achieved normal weight, and fully recovered glucose tolerance, insulin sensitivity, insulin secretion and insulin content. Besides, increased organs weight, hyperlipemia, hypoadiponectinemia, and hypertrophic islets all returned to normal. Similarly, Lim et al. provided 11 newly diagnosed T2DM patients with VLCD of 600 kcal/day, and found that fasting blood glucose and hepatic insulin sensitivity fell to normal after 1 week of CR and β -cell function (insulin secretion rate and first-phase insulin response) increased towards normal over the 8 weeks of CR [7]. These results support our finding. Although the degree and duration of CR were different in these two studies, both studies confirmed β -cell dysfunction could be reversed by CR in obesity and the early stage of T2DM. However, it is very difficult to maintain this severe CR strategy. Another animal study [10] demonstrated that body weight and glucose tolerance were normalized after 3 weeks of 40 % CR in ob/ob

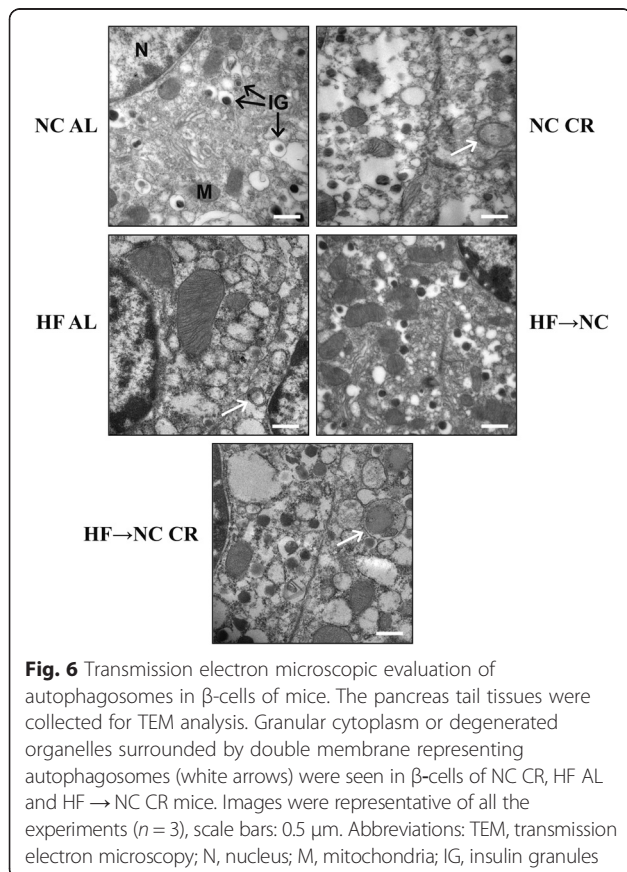


Fig. 6 Transmission electron microscopic evaluation of autophagosomes in β -cells of mice. The pancreas tail tissues were collected for TEM analysis. Granular cytoplasm or degenerated organelles surrounded by double membrane representing autophagosomes (white arrows) were seen in β -cells of NC CR, HF AL and HF \rightarrow NC CR mice. Images were representative of all the experiments ($n = 3$), scale bars: 0.5 μ m. Abbreviations: TEM, transmission electron microscopy; N, nucleus; M, mitochondria; IG, insulin granules

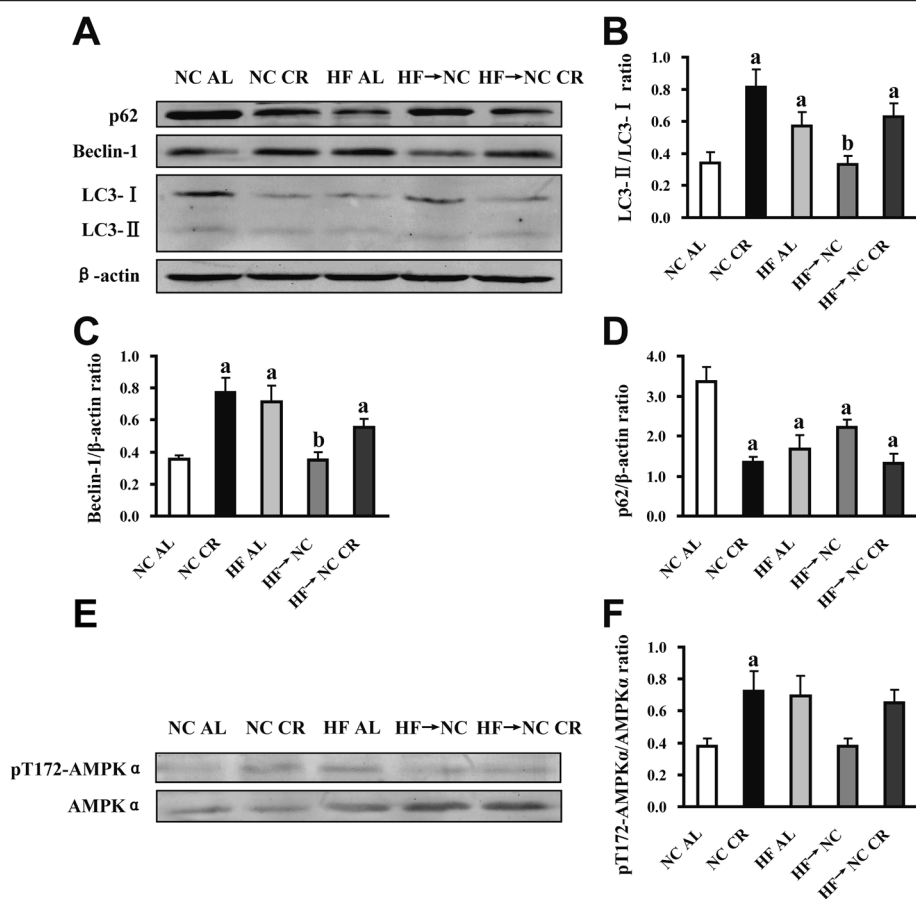


Fig. 7 Effects of CR on the expression of autophagy markers and phosphorylated AMPK in islets. **a** LC3, beclin-1 and p62 protein levels in freshly isolated islets were determined by western blot, β -actin was used as an internal standard and representative blots were shown. **b** the ratio of LC3-II to LC3-I ($n = 6$). **c** and **d** the protein expressions of beclin-1 and p62 relative to β -actin ($n = 6$). **e** Representative blots of phosphorylated and total AMPK α protein expression in freshly isolated islets. **f** the ratio of pT172-AMPK α to total AMPK α ($n = 6$). Data were presented as means \pm SE, *a* indicates $P < 0.05$ versus NC AL group; *b* indicates $P < 0.05$ versus HF AL group

mice, but circulating insulin levels remained high, implying insulin sensitivity was not restored. However, β -cell functions such as insulin synthesis and secretion were not explored in this study. Discrepancies in the restoration of insulin sensitivity between this previous study and our findings might be due to the difference in obese animal models used. Moreover, we further investigated the role of autophagy in this process and found that β -cell autophagy was activated in HF \rightarrow NC CR mice. To our knowledge no study has yet reported the effect of CR on β -cell autophagy in obese mice, and there are only few studies that have reported autophagy is up-regulated in the heart and liver during CR in DIO mice or diabetic rats [23, 24]. Owing to the fact that autophagy can be activated under nutrient-poor conditions to maintain energy homeostasis [12, 13], we suppose that the sudden negative energy balance may contribute to the activation of β -cell autophagy in HF \rightarrow NC CR mice. Considering the beneficial effect of autophagy on β -cells [13, 25], the activation of β -cell autophagy might

contribute to the restoration of β -cell functions in HF \rightarrow NC CR mice.

Switching from HF to NC without CR for 3 weeks normalized glucose tolerance, and reduced (but not normalized) body weight. It also showed unimproved early-phase insulin secretion *in vivo* and GSIS *in vitro*. Similarly, Agardh CD et al. demonstrated that switching from high-fat diet to low-fat diet for 4 weeks normalized glucose tolerance and reduced body weight in C57BL/6 J mice [26]. However, in contrast to our results, they showed improved early-phase insulin secretion *in vivo*. This might be due to that their treatments lasted for longer time. Additionally, many studies have indicated blood glucose levels return to normal earlier than body weight or insulin secretion [7, 9]. As HF \rightarrow NC mice showed, although they achieved normoglycemia, defective insulin secretion still existed. Additionally, β -cell autophagy was not activated in HF \rightarrow NC CR mice, which might be related with the unimproved insulin secretion of these mice. These findings suggest that besides normoglycemia, restoring β -cell function should

also be regarded as the primary endpoint and target in intervention studies for obesity and T2DM.

In addition to applying CR on obese mice, we also evaluated the effects of CR on normal mice, and found decreased islet size and insulin content with unchanged GSIS, suggesting insulin storage but not insulin secretion was reduced. This was supported by a study that demonstrated CR potentiated amino acid-stimulated insulin secretion (AASIS) instead of GSIS [27]. Similar to that reported by Fok et al. [28], we also observed reduced blood glucose levels during IPGTT, although plasma insulin levels were normal, which might be explained by elevated insulin sensitivity in NC CR mice. Similar to the induced β -cell autophagy in 24-h fasted mice [12], we found β -cell autophagy was up-regulated in NC CR mice, and this might be due to acute energy depletion that was further confirmed by the presence of activated AMPK. However, both induction and inhibition of autophagy have been reported in starved INS-1 cells (a rat insulinoma-derived β -cell line), the variation of timing when depletion occurs might explain this inconsistency [13, 29]. As reported by previous studies, the up-regulation of β -cell autophagy can increase insulin secretion [13, 14, 29]. However, in our study, the insulin secretion of NC CR mice was comparable with that of NC AL group. The following reasons might explain this phenomenon. On the one hand, the activated β -cell autophagy in these mice could increase insulin secretion, but on the other hand, the fasting blood glucose levels of NC CR mice tended to decrease owing to their inadequate energy intake, and the decline of blood glucose levels would initiate the self-regulation mechanism of the body to reduce insulin secretion. So in general, the fasting plasma insulin levels of NC CR mice were kept in normal. In a word, short-term CR on normal mice had no significant effect on β -cell functions.

CR as an energy deficiency condition is closely related to increased intracellular AMP (adenosine monophosphate) level, which can lead to AMPK activation. And AMPK activation can directly induce autophagy [30]. We found AMPK was activated only in NC CR islets. However, the lack of AMPK activation in HF AL and HF \rightarrow NC CR mice was probably due to the energy challenge not being severe enough to cause changes in AMP, and it implied the activation of β -cell autophagy in these mice was not through the AMPK pathway. It is reported that autophagy is a complex process regulated by multiple pathways including AMPK, mTOR, SIRT1, Bcl-2 and p53 [31, 32], therefore other pathways might be responsible for the activation of β -cell autophagy in HF AL and HF \rightarrow NC CR mice.

Conclusions

In conclusion, our study demonstrates for the first time that moderate (40 %) CR to achieve normal weight can reverse β -cell dysfunction and insulin resistance, and

restore glucose homeostasis in DIO mice. Our study provides an encouraging sign that β -cell dysfunction is completely reversible in obesity and the early stage of T2DM. Furthermore, we propose that the activation of β -cell autophagy may play a role in this process, independent of AMPK activation. However, this hypothesis still needs to be confirmed, for example by using β cell-specific autophagy-deficient mice, and the responsible signaling pathways still require clarification.

Abbreviations

DIO: Diet-induced obese; T2DM: Type 2 diabetes mellitus; VLCD: Very low-calorie diet; NC: Normal chow; HF: High-fat diet; AL: Ad libitum; CR: Calorie restriction; NEFA: Non-esterified fatty acids; IPGTT: Intraperitoneal glucose tolerance test; AUC: Area under the curve; HOMA-IR: Homeostasis model assessment of insulin resistance; HE: Hematoxylin and eosin; IHC: Immunohistochemistry; TEM: Transmission electron microscopy; GSIS: Glucose-stimulated insulin secretion; KRBH: Krebs-Ringer bicarbonate-HEPES buffer; IGT: Impaired glucose tolerance; AASIS: Amino acid-stimulated insulin secretion; AMP: Adenosine monophosphate; AMPK: Adenosine monophosphate-activated protein kinase.

Competing interests

The authors declare that they have no competing interests.

Authors' contributions

XG carried out the animal experiment, participated in molecular biology studies and immunoassays, and drafted the manuscript. DY carried out pancreatic islet isolation and electron microscopy examination. YZ assisted with the animal trial, biochemical assays and statistical analysis. HT involved in the design and coordination of the study and revising the manuscript critically for important intellectual content. YZ was the primary investigator of the project and had original idea. All authors read and approved the final manuscript.

Acknowledgements

This study was supported by National Natural Science Foundation of China (No. 81041024) and the Funds of Academic Leaders of Beijing (No. 2013-2-006). We thank Dr. Yanju Miao for instruction in western blot and Dr. Lin Wang for his comments on this manuscript.

Received: 8 June 2015 Accepted: 18 September 2015

Published online: 06 October 2015

References

- Finkelstein EA, Khavjou OA, Thompson H, Trogon JG, Pan L, Sherry B, et al. Obesity and severe obesity forecasts through 2030. *Am J Prev Med*. 2012;42:563–70.
- Cheng D. Prevalence, predisposition and prevention of type II diabetes. *Nutr Metab (Lond)*. 2005;2:29.
- Peyot ML, Pepin E, Lamontagne J, Latour MG, Zarrouki B, Lussier R, et al. Beta-cell failure in diet-induced obese mice stratified according to body weight gain: secretory dysfunction and altered islet lipid metabolism without steatosis or reduced beta-cell mass. *Diabetes*. 2010;59:2178–87.
- Li G, Zhang P, Wang J, Gregg EW, Yang W, Gong Q, et al. The long-term effect of lifestyle interventions to prevent diabetes in the China Da Qing Diabetes Prevention Study: a 20-year follow-up study. *Lancet*. 2008;371:1783–9.
- Malandrucchio I, Pasqualetti P, Giordani I, Manfellotto D, De Marco F, Alegiani F, et al. Very-low-calorie diet: a quick therapeutic tool to improve β -cell function in morbidly obese patients with type 2 diabetes. *Am J Clin Nutr*. 2012;95:609–13.
- Jackness C, Karmally W, Febres G, Conwell IM, Ahmed L, Bessler M, et al. Very low-calorie diet mimics the early beneficial effect of Roux-en-Y gastric bypass on insulin sensitivity and β -cell function in type 2 diabetic patients. *Diabetes*. 2013;62:3027–32.
- Lim EL, Hollingsworth KG, Aribisala BS, Chen MJ, Mathers JC, Taylor R. Reversal of type 2 diabetes: normalisation of beta cell function in

- association with decreased pancreas and liver triacylglycerol. *Diabetologia*. 2011;54:2506–14.
8. Larson-Meyer DE, Heilbronn LK, Redman LM, Newcomer BR, Frisard MI, Anton S, et al. Effect of calorie restriction with or without exercise on insulin sensitivity, beta-cell function, fat cell size, and ectopic lipid in overweight subjects. *Diabetes Care*. 2006;29:1337–44.
 9. Petersen KF, Dufour S, Befroy D, Lehrke M, Hendler RE, Shulman GI. Reversal of nonalcoholic hepatic steatosis, hepatic insulin resistance, and hyperglycemia by moderate weight reduction in patients with type 2 diabetes. *Diabetes*. 2005;54:603–8.
 10. Sloan C, Tuinei J, Nemetz K, Frandsen J, Soto J, Wride N, et al. Central leptin signaling is required to normalize myocardial fatty acid oxidation rates in caloric-restricted ob/ob mice. *Diabetes*. 2011;60:1424–34.
 11. Nuñez CE, Rodrigues VS, Gomes FS, Moura RF, Victorio SC, Bombassaro B, et al. Defective regulation of adipose tissue autophagy in obesity. *Int J Obes (Lond)*. 2013;37:1473–80.
 12. Fujimoto K, Hanson PT, Tran H, Ford EL, Han Z, Johnson JD, et al. Autophagy regulates pancreatic beta cell death in response to Pdx1 deficiency and nutrient deprivation. *J Biol Chem*. 2009;284:27664–73.
 13. Ebato C, Uchida T, Arakawa M, Komatsu M, Ueno T, Komiya K, et al. Autophagy is important in islet homeostasis and compensatory increase of beta cell mass in response to high-fat diet. *Cell Metab*. 2008;8:325–32.
 14. Jung HS, Chung KW, Won Kim J, Kim J, Komatsu M, Tanaka K. Loss of autophagy diminishes pancreatic beta cell mass and function with resultant hyperglycemia. *Cell Metab*. 2008;8:318–24.
 15. Bernardis LL, Patterson BD. Correlation between 'lee index' and carcass fat content in weanling and adult female rats with hypothalamic lesions. *J Endocrinol*. 1968;40:527–8.
 16. Delghingaro-Augusto V, Décary S, Peyot ML, Latour MG, Lamontagne J, Paradis-Isler N, et al. Voluntary running exercise prevents β -cell failure in susceptible islets of the Zucker diabetic fatty rat. *Am J Physiol Endocrinol Metab*. 2012;302:E254–64.
 17. Zhou Y, Jetton TL, Goshorn S, Lynch CJ, She P. Transamination is required for α -ketoisocaproate but not leucine to stimulate insulin secretion. *J Biol Chem*. 2010;285:33718–26.
 18. Barlow AD, Xie J, Moore CE, Campbell SC, Shaw JA, Nicholson ML, et al. Rapamycin toxicity in MIN6 cells and rat and human islets is mediated by the inhibition of mTOR complex 2 (mTORC2). *Diabetologia*. 2012;55:1355–65.
 19. Wang HT, Liu CF, Tsai TH, Chen YL, Chang HW, Tsai CY, et al. Effect of obesity reduction on preservation of heart function and attenuation of left ventricular remodeling, oxidative stress and inflammation in obese mice. *J Transl Med*. 2012;10:145.
 20. Sauter NS, Schulthess FT, Galasso R, Castellani LW, Maedler K. The antiinflammatory cytokine interleukin-1 receptor antagonist protects from high-fat diet-induced hyperglycemia. *Endocrinology*. 2008;149:2208–18.
 21. Choi SE, Lee SM, Lee YJ, Li LJ, Lee SJ, Lee JH, et al. Protective role of autophagy in palmitate-induced INS-1 beta-cell death. *Endocrinology*. 2009;150:126–34.
 22. McNay DE, Speakman JR. High fat diet causes rebound weight gain. *Mol Metab*. 2012;2:103–8.
 23. Cui M, Yu H, Wang J, Gao J, Li J. Chronic caloric restriction and exercise improve metabolic conditions of dietary-induced obese mice in autophagy correlated manner without involving AMPK. *J Diabetes Res*. 2013;2013:852754.
 24. Lee JH, Lee JH, Jin M, Han SD, Chon GR, Kim IH, et al. Diet control to achieve euglycemia induces significant loss of heart and liver weight via increased autophagy compared with ad libitum diet in diabetic rats. *Exp Mol Med*. 2014;46:e111.
 25. Bachar-Wikstrom E, Wikstrom JD, Ariav Y, Tirosh B, Kaiser N, Cerasi E, et al. Stimulation of autophagy improves endoplasmic reticulum stress-induced diabetes. *Diabetes*. 2013;62:1227–37.
 26. Agardh CD, Åhrén B. Switching from high-fat to low-fat diet normalizes glucose metabolism and improves glucose-stimulated insulin secretion and insulin sensitivity but not body weight in C57BL/6 J mice. *Pancreas*. 2012;41:253–7.
 27. Haigis MC, Mostoslavsky R, Haigis KM, Fahie K, Christodoulou DC, Murphy AJ. SIRT4 inhibits glutamate dehydrogenase and opposes the effects of calorie restriction in pancreatic beta cells. *Cell*. 2006;126:941–54.
 28. Fok WC, Zhang Y, Salmon AB, Bhattacharya A, Gunda R, Jones D, et al. Short-term treatment with rapamycin and dietary restriction have overlapping and distinctive effects in young mice. *J Gerontol A Biol Sci Med Sci*. 2013;68:108–16.
 29. Goginashvili A, Zhang Z, Erbs E, Spiegelhalter C, Kessler P, Mihlan M, et al. Insulin granules. Insulin secretory granules control autophagy in pancreatic β -cells. *Science*. 2015;347:878–82.
 30. Kim J, Kundu M, Viollet B, Guan KL. AMPK and mTOR regulate autophagy through direct phosphorylation of Ulk1. *Nat Cell Biol*. 2011;13:132–41.
 31. Ning YC, Cai GY, Zhuo L, Gao JJ, Dong D, Cui S, et al. Short-term calorie restriction protects against renal senescence of aged rats by increasing autophagic activity and reducing oxidative damage. *Mech Ageing Dev*. 2013;134:570–9.
 32. Swampillai AL, Salomoni P, Short SC. The role of autophagy in clinical practice. *Clin Oncol (R Coll Radiol)*. 2012;24:387–95.

Submit your next manuscript to BioMed Central and take full advantage of:

- Convenient online submission
- Thorough peer review
- No space constraints or color figure charges
- Immediate publication on acceptance
- Inclusion in PubMed, CAS, Scopus and Google Scholar
- Research which is freely available for redistribution

Submit your manuscript at
www.biomedcentral.com/submit

